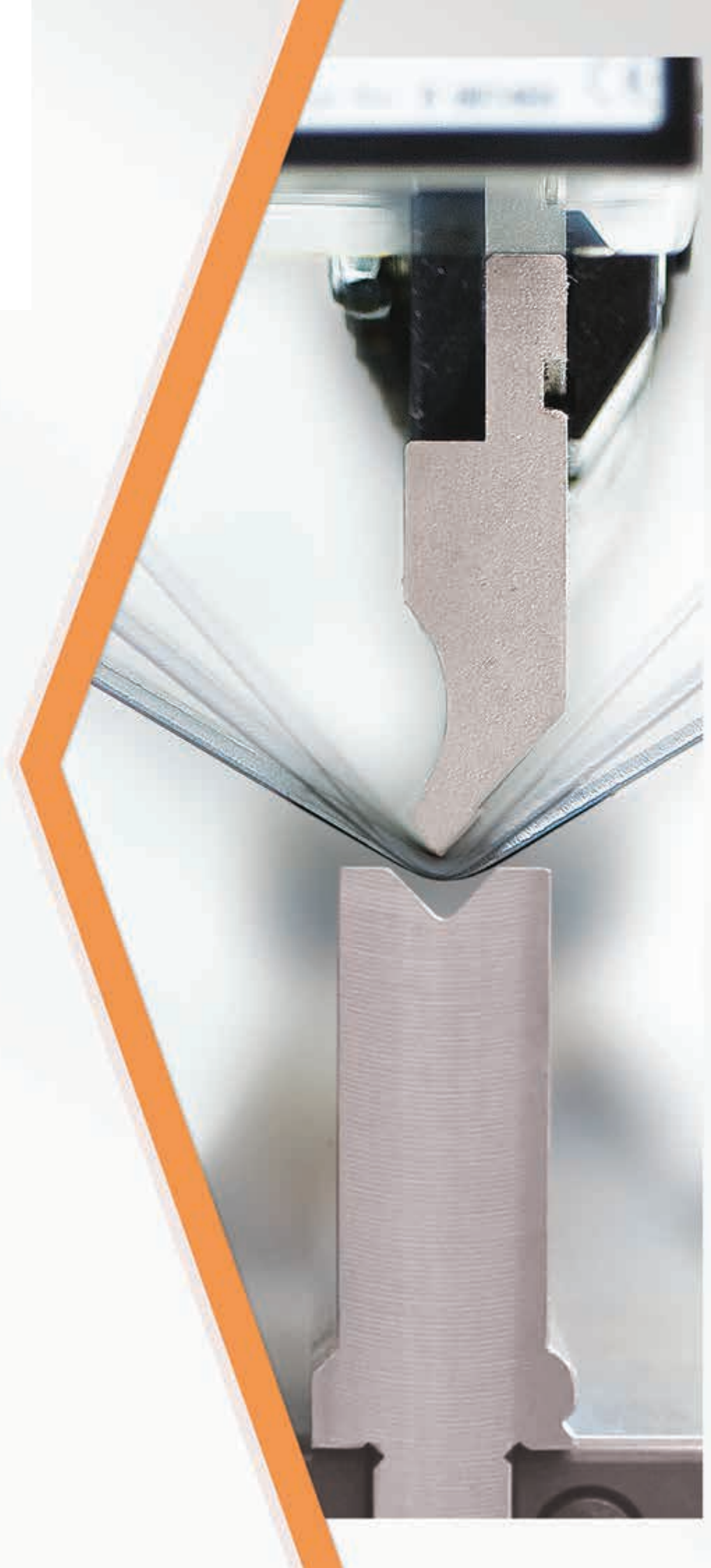


PRESS BRAKE

+ INDUSTRY 4.0



ERMAKSAN

INNOVATIVE TECHNOLOGIES

ermaksan.com.tr

PRESS BRAKES

+ INDUSTRY 4.0

SERVO PRESS BRAKE



GREEN PRESS FX SERVO

Environmentalist Technology...

4

- 1.6 - 2 - 2.6 - 3 m length options
- 40 - ... - 100 ton capacity options
- Std. 6 axes - Y1, Y2, X, R, Z1, Z2
- Leuze body protection light curtain
- ER TOUCH EDUTION, ER99, DELEM 66T

HYBRID PRESS BRAKE



EVO-III

New Generation Technology...

8

- 2.6 - ... - 4.27 m length options
- 100 - 260 ton capacity options
- High stroke (275) and daylight (550)
- Very high speed cycle (200 - 12 - 190)
- Large throat depth - 410 mm
- Std. 6 axes - Y1, Y2, X, R, Z1, Z2
- LazerSafe laser finger protection
- Motorized crowning
- ER TOUCH EDUTION, ER99, DELEM 66T



SPEED-BEND PRO

High Sensitivity Maximum Productivity...

14

- 1.27 - ... - 6 m length options
- 40 - ... - 600 ton capacity options
- High stroke (275) and daylight (550)
- Very high speed cycle (200 - 12 - 190)
- Large throat depth - 410 mm
- Std. 6 axes - Y1, Y2, X, R, Z1, Z2
- Akas laser finger protection / Leuze body protection light curtain
- Motorized crowning
- Oil cooler for 400 tons and above capacities
- ER TOUCH EDUTION, ER99, DELEM 66T, CYBELEC VISITOUCH 19, ESA S660

32 **POWER-BEND ST**

33 **MICRO BEND**

34 **HEAVY DUTY**

42 **ER TOUCH**

43 **INDUSTRY 4.0**

46 **DELEM**

48 **CYBELEC**

50 **STEP AUTOMATION**

51 **ESAutomation**

Ermaksan press brakes are made of high strength mono block st44 quality steel and have a rigid structure that is tension relieved with the state of art technology. Thus, they are ensured to have long life. Its endurance against heavy conditions is ensured by means of hardened and ground dies that perform precision bending.

While Ermaksan press brakes are user friendly with both the standard and the optional hardware features, it brings profit to your investment with the power it gives to your business in economic terms.

The press brakes produced by Ermaksan's expert engineers by use of high technology have been contributing to high-quality and efficient production for years all over the world. While we offer customized solutions to our customers with the digital conversion dynamics, we are making production more flexible and efficient, and offering the most cost optimized solutions. Thus, we pride ourself on contributing to the smart production processes in the fourth industrial revolution.

HYDRAULIC PRESS BRAKE



POWER-BEND FALCON

Stronger, Faster And Deeper Bends...

20

- 1 - ... - 6 m length options
- 40 - ... - 600 ton capacity options
- High stroke (275) and daylight (550)
- High speed cycle (180 - 10 - 135)
- Large throat depth - 410 mm
- Std. 4 axes - Y1, Y2, X, R
- Motorized crowning
- Oil cooler for 400 tons and above capacities
- ER TOUCH EDUTION, CYBELEC CYBTOUCH 15 PS, DELEM DA58T, ESA S640



POWER-BEND PRO

Perfect Combination of Speed and Power...

24

- 1 - ... - 6 m length options
- 40 - ... - 600 ton capacity options
- High stroke (275) and daylight (550)
- High speed cycle (180 - 10 - 135)
- Large throat depth - 410 mm
- Std. 3 axes - Y1, Y2, X
- Manual crowning at 260 - 320 tons
- Motorized crowning at 400 tons or more
- Oil cooler for 400 tons and above capacities
- ER TOUCH EDUTION, CYBELEC CYBTOUCH 12 PS, DELEM DA52S, ESA S630



ECO-BEND EXPERT

Economic Solution...

30

- 2.6 - ... - 4 m length options
- 80 - ... - 200 ton capacity options
- Normal stroke (160) and daylight (380)
- Normal speed cycle (90 - 6 - 60)
- Normal throat depth - 250 mm
- Std. 3 axes - Y1, Y2, X
- ER TOUCH EDUTION, CYBELEC CYBTOUCH 12 PS, DELEM DA52S, ESA S630

GREEN PRESS FX SERVO

SERVO-MOTOR
ELECTRICAL PRESS BRAKES



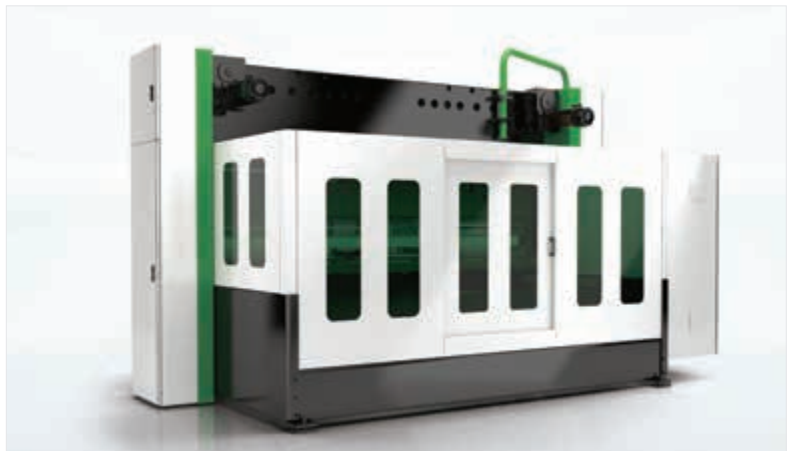
Environmentalist Technology...

Thanks to its quiet operation and low energy consumption, the Green Press FX Servo press brake which is one of our green press group machines have about 69% less energy consumption than hydraulic press brakes.

No hydraulic oil is required for the operation of the machine. Since there aren't any hydraulic system components such as hydraulic filters, sealings, etc., maintenance costs are at minimum level. In addition, no problem is encountered in terms of contamination of the working area caused by oil leakage.

With the precise linear bearing and the sliding front support arms that can move right and left on the rail, the sheet can be easily controlled by the operator from the front. Also, the length of the parts can be measured by means of the ruler mounted on the front support arms. The sheet can be fixed from the front side with the aid of the flip stop which is mounted inside the T slot.

- ▶ 98% energy saving in standby
- ▶ Quick and easy tool replacement
- ▶ Precise bending
- ▶ Short-term depreciation
- ▶ User friendly touch screen
- ▶ Electro-mechanical press brake

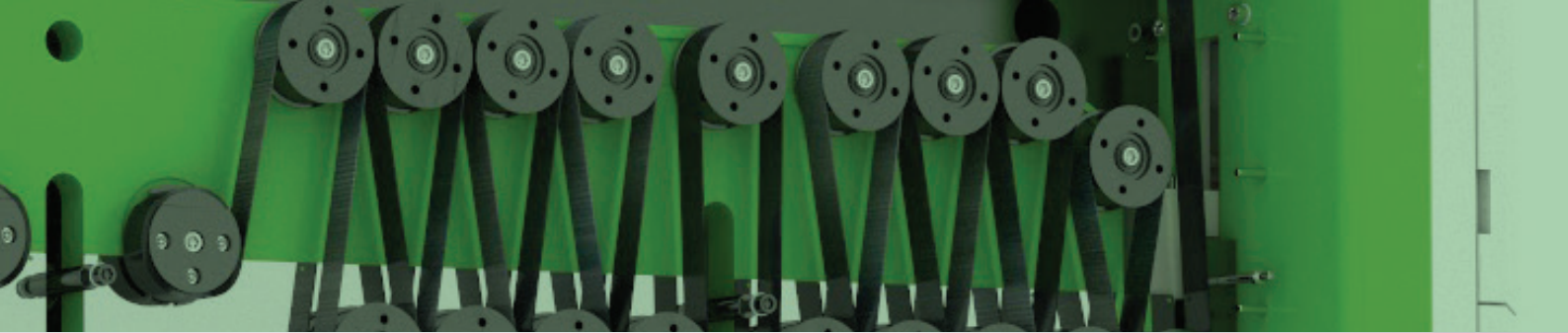


QUIET OPERATION

The beam downward movement is performed with the aid of belts, and its return is performed with the springs. Thus, the machine will run quietly and will not create any noise pollution that could disturb the environment.

LOW MAINTENANCE COST

No hydraulic system and cylinder were used on the machine. Since it is a completely mechanical machine, you can use it with less maintenance cost.



ENVIRONMENT FRIENDLY

It is an environment friendly machine that stands out with its high power and low energy consumption due to the use of high energy efficient servo motor in the machine in which no industrial oil is used.

LOW ENERGY CONSUMPTION

High energy efficient servo motor is used. The motors will not work while the upper beam is not moving. That provides 69% energy savings.

UNLIMITED FULL LENGTH BENDING

Unlike the known press brakes, there is no throat in this machine. Full length bendings are done between the feet. There are no restrictions compared to the hydraulic press brakes.

RIGID STRUCTURE

Dynamically and statically strong body processed with high precision.

GREEN PRESS FX SERVO

GENERAL SPECIFICATIONS



STANDARD EQUIPMENT

- Standard machine sizes; 1600, 2100, 2600, 3100 mm
- Standard machine powers; 40, 65, 80, 100 tons
- Machine stroke 300mm
- Daylight 590mm
- No need for crowning
- Standard 4 axis backgauge. X: 800 mm, R: 250 mm, Z1, Z2
- Control units; ER TOUCH EDUTION, ER99, DELEM 66T
- HEIDENHAIN linear scales
- Electrical panel designed and manufactured from SIEMENS electrical and automation products in accordance with the CE regulations
- ERMAKSAN Promecam top tool holder
- ROLLERI PS.135-85-R08 top tool
- ROLLERI M460-R bottom tool
- ERMAKSAN bottom tool holder
- WILA OB-I-MC-TY/UPB mechanical bottom tool clamping system
- Sliding front support arms with T slot and mm/inch scale
- LEUZE MLC 100 front safety system
- Rear sliding cover + switch safety system
- Side cover + switch safety system
- LED-light enclosures

OPTIONAL EQUIPMENT

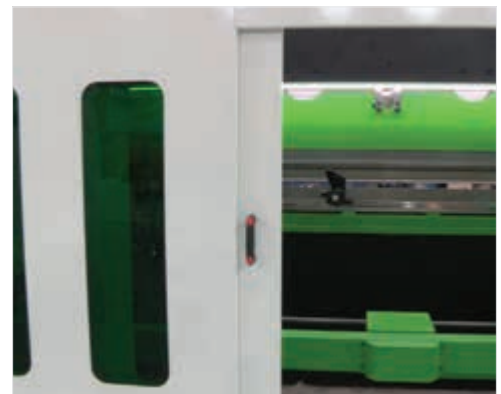
- Optional daylight
- Single axis, 2 axis, 6 axis backgauge options
- WILA NSCL type top tool holder options
- WILA NSCR type bottom tool holder options
- Motorized crowning
- LED-bar bending guide system
- AKAS Laser front protection
- DSP Laser front protection
- AP3 + AP4 sheet support system
- Rear sheet support system
- Optional control panel arm
- Control units; ER TOUCH EDUTION, Delem 69T, Cybelec Modeva 19T



■ Top beam is moved with high efficient synchronous ac servo motors (S)

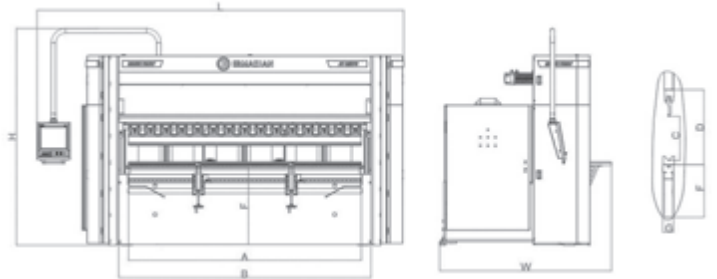


■ 4 axes (X, R, Z1, Z2) Backgauge with servo motor
Backgauge with positioning accuracy of 0.05 mm according to the desired geometry (S)



■ Maximize your safety with the rear sliding cover and switch. Check inside the machine by means of the windows (S)

(S) : Standard (O) : Optional



TECHNICAL SPECIFICATIONS		GP FX SERVO 1003	GP FX SERVO 8026	GP FX SERVO 6521	GP FX SERVO 4016
BENDING LENGHT (A)	mm (inch)	3100 (122,0)	2600 (102,4)	2100 (82,7)	1600 (63,0)
BENDING POWER	Ton (Us Tons)	100 (110)	80 (88)	65 (72)	40 (44)
SRANDARD V-DIE OPENING (V)	mm (inch)	50 (1,97)	50 (1,97)	50 (1,97)	50 (1,97)
SHEET THICKNESS (RM=42kgf/mm ²) (T)	mm (inch)	5 (0,19)	5 (0,19)	5 (0,19)	4,5 (0,19)
DISTANCE BETWEEN COLUMNS (B)	mm (inch)	3360 (132,3)	2860 (112,6)	2360 (92,9)	1860 (73,2)
Y AXIS RAPID SPEED	mm/s (inch/s)	75 (2,95)	90 (3,54)	160 (6,30)	180 (7,09)
Y AXIS WORKING SPEED	mm/s (inch/s)	10 (0,39)	10 (0,39)	10 (0,39)	10 (0,39)
Y AXIS RETURN SPEED	mm/s (inch/s)	75 (2,95)	90 (3,54)	160 (6,30)	180 (7,09)
TRAVEL IN X AXIS	mm (inch)	800 (31,50)	800 (31,50)	800 (31,50)	800 (31,50)
SPEED OF X AXIS	mm/s (inch/s)	500 (19,69)	500 (19,69)	500 (19,69)	500 (19,69)
TRAVEL IN R AXIS	mm (inch)	250 (9,84)	250 (9,84)	250 (9,84)	250 (9,84)
SPEED OF R AXIS	mm/s (inch/s)	350 (13,78)	350 (13,78)	350 (13,78)	350 (13,78)
SPEED OF Z1, Z2 AXIS	mm/s (inch/s)	1000 (39,37)	1000 (39,37)	1000 (39,37)	1000 (39,37)
BACK GAUGE FINGER BLOCKS	Amount	2	2	2	2
NUMBER OF SHEET SUPPORT (Slidind front arms)	Amount	2	2	2	2
MOTOR POWER	kW (Hp)	2x5,5 (2x7,37)	2x5,5 (2x7,37)	2x5,5 (2x7,37)	2x5,5 (2x7,37)
STROKE (C)	mm (inch)	300 (11,81)	300 (11,81)	300 (11,81)	300 (11,81)
DAYLIGHT (D)	mm (inch)	590 (23,23)	590 (23,23)	590 (23,23)	590 (23,23)
TABLE HEIGHT (F)	mm (inch)	950 (37,40)	950 (37,40)	950 (37,40)	950 (37,40)
TABLE WIDTH (G)	mm (inch)	60 (2,36)	60 (2,36)	60 (2,36)	60 (2,36)
LENGTH (L)	mm (inch)	4870 (191,7)	4370 (172,0)	3870 (152,4)	3370 (132,7)
HEIGHT (H)	mm (inch)	2890 (113,8)	2890 (113,8)	2890 (113,8)	2890 (113,8)
WIDTH (W)	mm (inch)	2290 (90,2)	2290 (90,2)	2290 (90,2)	2290 (90,2)
WEIGHT	kg. (lbr.)	7500 (16538)	6500 (14333)	5650 (12458)	4850 (10694)

* Bending speed can not exceed 10mm/sec (0,39inc/sec) according to the CE regulations.



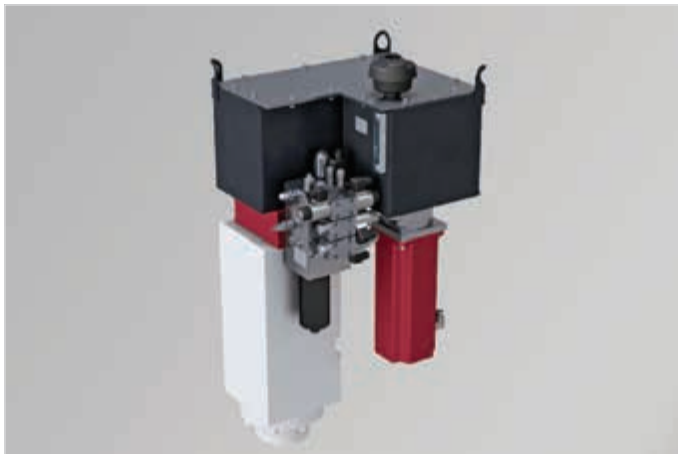
EVO III

HYBRID
PRESS BRAKES

New Generation Technology...

With the rise in the energy prices in the global market, preferability of low energy consumption machines is increasing. In addition to protecting the business profits, consumers shape their productions with the social responsibility awareness such as environmental awareness, effective use of energy resources etc. Setting off from this purpose, Ermaksan combines its experience in producing press brakes for more than 30 years with today's state of art technologies and offers the new generation Evolution III series hybrid press brakes to its users.

- ▶ Electro-mechanical press brakes
- ▶ Low operation cost
- ▶ Precise bending
- ▶ Low maintenance cost
- ▶ Easy service by remote access



MINIMUM MAINTENANCE WITH CLOSED CIRCUIT HYDRAULIC SYSTEM

It has a special, closed circuit hydraulic system. It needs minimum maintenance compared to the hydraulic machines.

REALISTIC 3D MODELLING (ER TOUCH)

The controller's 3D feature provides the operator with ease of distinguishing the parts to be processed and ease of application.



PRECISION POSITIONING OF THE SHEET WITH SERVO-MOTOR BACKGAUGE

All of the motors used in the backgauge are servo motors. Thus, the sheet can be positioned with minimum precision.

QUIET OPERATION

With 63 dB of sound level, it is the quietest among the sheet metal bending machines.

LOW ENERGY CONSUMPTION (ENVIRONMENT FRIENDLY)

The special hydraulic system has low energy consumption. At the same time, it is environment friendly with an average oil consumption of 34.5 lt.

LOW OPERATION COST

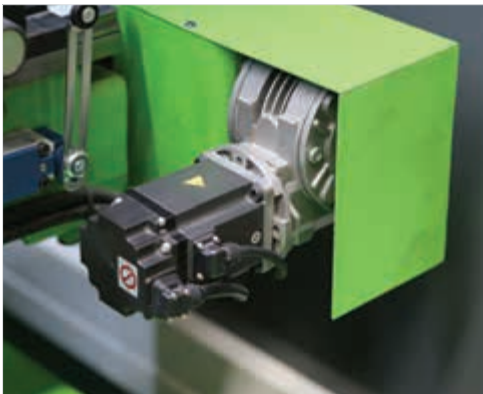
Operating cost is minimum due to low energy consumption. Thus, it gives advantages to the user with high efficiency and low operation cost.

EVO III

GENERAL SPECIFICATIONS



■ Provides ease of bending in reverse bending and in multiple stations with 4 axes backgauge. Time saving in difficult parts (S)



■ The backgauge axes with AC servo motor can move precisely and quickly by means of precision ballscrew, reducer and rails (S)



■ For reverse Z bends, it prevents the part from hitting the backgauge finger by means of the moving tip (S)



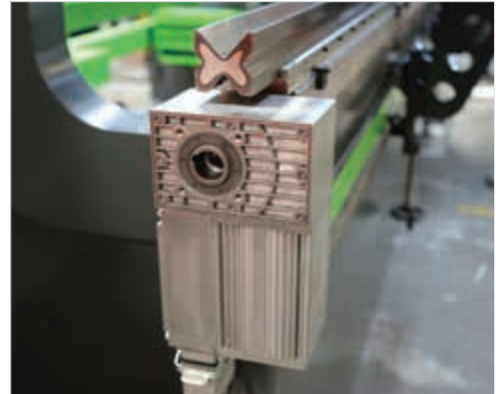
■ For full length bends, backgauge axis can be used to the maximum extent with a throat depth of 410 mm (S)

STANDARD EQUIPMENT

- Steel body with mono bloc welding of ST44 material which is rigid against bending and high tension
- 6 axes (Y1, Y2, X, R, Z1, Z2)
- CNC controlled backgauge system with 4 axes (X, R, Z1, Z2) AC servo motor
- HOERBIGER hydraulic system
- CNC controlled motorized crowning system
- Top and bottom tools hardened and grinded (835 mm length)
- Easy clamping top tool holder system
- Control units; ER TOUCH EDUTION, DELEM 66T, ER99
- 3D colour graphics display and offline software
- Electric panel with cooling system designed and manufactured from SIEMENS electrical and automation products in compliance with the CE regulations
- Backlight protection
- Switch side protection covers
- Y1+Y2 axis synchronization with a tolerance of 0.01 provided by linear scales
- CE compliant foot pedal
- Sliding front support arms with T slot and mm/inch scale
- 410 mm throat depth (110 - 170 tons)
- Leuze front light protection system

OPTIONAL EQUIPMENT

- Control units; ER TOUCH EDUTION, Delem 69T
- 5, 6 axes backgauge options
- AKAS LASER finger protection system
- Laser angle measurement system
- Hydraulic and hydro-dynamic crowning systems
- Pneumatic top tool holder system
- Hydraulic top and bottom tool holder systems
- CNC controlled automatic bend sheet support arms (AP3+AP4 axes)
- Automatic sliders lubricating system
- Special throat depths
- Special top and bottom tools
- Cybelelec Offline etc. software options
- Tool storage cabinet
- Led bar



- The motorized crowning system communicates with the CNC controller and performs automatic crowning, thus the motorized crowning system ensures that the part is at every point and have equal bending angle (S)



- ER TOUCH, touch screen controller equipped with 3D features (S)



- Easy clamping top tool holder system with the bottom and top tools (S)



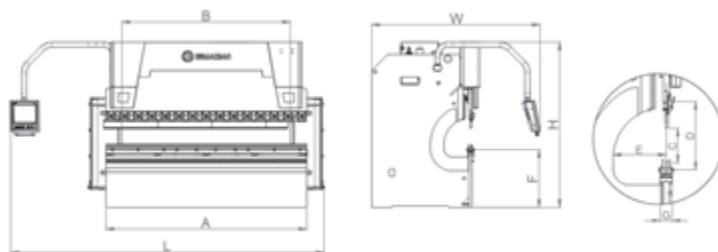
- Height adjustable sliding front support arms with T slot and mm/inch scale (S)

EVO III

TECHNICAL SPECIFICATIONS

TYPE	BENDING LENGTH	BENDING POWER	STANDARD V CHANNEL WIDTH	SHEET THICKNESS (Rm=42kgf/mm ²)	DISTANCE BETWEEN COLUMNS	Y RAPID SPEED	Y WORKING SPEED	Y RETURN SPEED	CROWNING	TRAVEL IN X AXIS	SPEED OF X AXIS	TRAVEL OF R AXIS	SPEED OF R AXIS	SPEED OF TRAVEL Z1,Z2 AXIS
	A		V	T	B									
	mm (inch)	Ton (tons)	mm (inch)	mm (inch)	mm (inch)	mm/s (inch/s)	mm/s (inch/s)	mm/s (inch/s)	standard	mm (inch)	mm/s (inch/s)	mm (inch)	mm/s (inch/s)	mm/s (inch/s)
2600 - 100 (8,53 - 110)	2600 (102,36)	100 (110)	50 (1,97)	5 (0,20)	2200 (86,61)	200 (7,87)	10 (0,39)	200 (7,87)	Motorized	800 (31,50)	500 (19,69)	250 (9,84)	350 (13,78)	1000 (39,37)
2600 - 137 (8,53 - 150,7)	2600 (102,36)	137 (150,7)	50 (1,97)	6 (0,24)	2200 (86,61)	160 (6,30)	9,5 (0,37)	160 (6,30)	Motorized	800 (31,50)	500 (19,69)	250 (9,84)	350 (13,78)	1000 (39,37)
3100 - 100 (10,17 - 110)	3100 (122,05)	100 (110)	50 (1,97)	5 (0,20)	2600 (102,36)	200 (7,87)	10 (0,39)	200 (7,87)	Motorized	800 (31,50)	500 (19,69)	250 (9,84)	350 (13,78)	1000 (39,37)
3100 - 137 (10,17 - 150,7)	3100 (122,05)	137 (150,7)	50 (1,97)	6 (0,24)	2600 (102,36)	180 (7,09)	9,5 (0,37)	160 (6,30)	Motorized	800 (31,50)	500 (19,69)	250 (9,84)	350 (13,78)	1000 (39,37)
3100 - 175 (10,17 - 192,5)	3100 (122,05)	175 (192,5)	50 (1,97)	6 (0,24)	2600 (102,36)	200 (7,87)	10 (0,39)	192 (7,56)	Motorized	800 (31,50)	500 (19,69)	250 (9,84)	350 (13,78)	1000 (39,37)
3100 - 220 (10,17 - 242)	3100 (122,05)	220 (242)	110 (4,33)	11 (0,43)	2600 (102,36)	197 (7,76)	10 (0,39)	174 (6,85)	Motorized	800 (31,50)	500 (19,69)	250 (9,84)	350 (13,78)	1000 (39,37)
3100 - 260 (10,17 - 286)	3100 (122,05)	260 (286)	120 (4,72)	13 (0,51)	2600 (102,36)	165 (6,50)	9,5 (0,37)	129 (5,08)	Motorized	800 (31,50)	500 (19,69)	250 (9,84)	350 (13,78)	1000 (39,37)
3760 - 137 (12,34 - 150,7)	3760 (148,03)	137 (150,7)	50 (1,97)	5 (0,20)	3250 (127,95)	180 (7,09)	9,5 (0,37)	160 (6,30)	Motorized	800 (31,50)	500 (19,69)	250 (9,84)	350 (13,78)	1000 (39,37)
3760 - 175 (12,34 - 192,5)	3760 (148,03)	175 (192,5)	50 (1,97)	6 (0,24)	3250 (127,95)	180 (7,09)	10 (0,39)	192 (7,56)	Motorized	800 (31,50)	500 (19,69)	250 (9,84)	350 (13,78)	1000 (39,37)
3760 - 220 (12,34 - 242)	3760 (148,03)	220 (242)	80 (3,15)	8 (0,31)	3250 (127,95)	180 (7,09)	10 (0,39)	174 (6,85)	Motorized	800 (31,50)	500 (19,69)	250 (9,84)	350 (13,78)	1000 (39,37)
3760 - 260 (12,34 - 286)	3760 (148,03)	260 (286)	80 (3,15)	8 (0,31)	3250 (127,95)	180 (7,09)	9,5 (0,37)	129 (5,08)	Motorized	800 (31,50)	500 (19,69)	250 (9,84)	350 (13,78)	1000 (39,37)
4100 - 137 (13,45 - 150,7)	4100 (161,42)	137 (150,7)	50 (1,97)	5 (0,20)	3600 (141,73)	180 (7,09)	9,5 (0,37)	160 (6,30)	Motorized	800 (31,50)	500 (19,69)	250 (9,84)	350 (13,78)	1000 (39,37)
4100 - 175 (13,45 - 192,5)	4100 (161,42)	175 (192,5)	50 (1,97)	5 (0,20)	3600 (141,73)	180 (7,09)	10 (0,39)	192 (7,56)	Motorized	800 (31,50)	500 (19,69)	250 (9,84)	350 (13,78)	1000 (39,37)
4100 - 220 (13,45 - 242)	4100 (161,42)	220 (242)	80 (3,15)	8 (0,31)	3600 (141,73)	180 (7,09)	10 (0,39)	174 (6,85)	Motorized	800 (31,50)	500 (19,69)	250 (9,84)	350 (13,78)	1000 (39,37)
4100 - 260 (13,45 - 286)	4100 (161,42)	260 (286)	110 (4,33)	10 (0,39)	3600 (141,73)	180 (7,09)	9,5 (0,37)	129 (5,08)	Motorized	800 (31,50)	500 (19,69)	250 (9,84)	350 (13,78)	1000 (39,37)
4270 - 137 (14 - 150,7)	4270 (168,11)	137 (150,7)	50 (1,97)	5 (0,20)	3780 (148,82)	180 (7,09)	9,5 (0,37)	160 (6,30)	Motorized	800 (31,50)	500 (19,69)	250 (9,84)	350 (13,78)	1000 (39,37)
4270 - 175 (14 - 192,5)	4270 (168,11)	175 (192,5)	50 (1,97)	5 (0,20)	3780 (148,82)	200 (7,87)	10 (0,39)	192 (7,56)	Motorized	800 (31,50)	500 (19,69)	250 (9,84)	350 (13,78)	1000 (39,37)
4270 - 220 (14 - 242)	4270 (168,11)	220 (242)	80 (3,15)	8 (0,31)	3780 (148,82)	197 (7,76)	10 (0,39)	174 (6,85)	Motorized	800 (31,50)	500 (19,69)	250 (9,84)	350 (13,78)	1000 (39,37)
4270 - 260 (14 - 286)	4270 (168,11)	260 (286)	110 (4,33)	10 (0,39)	3780 (148,82)	165 (6,50)	9,5 (0,37)	129 (5,08)	Motorized	800 (31,50)	500 (19,69)	250 (9,84)	350 (13,78)	1000 (39,37)

* Bending speed can not exceed 10mm/sec (0,39inc/sec) according to the CE regulations.



BACKGAUGE FINGER BLOCKS	NUMBER OF SHEET SUPPORT	OIL CAPACITY	MOTOR POWER	STROKE	DAYLIGHT	THROAT DEPTH	TABLE HEIGHT	TABLE WIDTH	LENGTH	HEIGHT	WIDTH	WEIGHT
				C	D	E	F	G	L	H	W	
amount	amount	lt. (us gallons)	kW (hp)	mm (inch)	mm (inch)	mm (inch)	mm (inch)	mm (inch)	mm (inch)	mm (inch)	mm (inch)	kg. (lbr.)
2	2	2x34,5 (2x,9,11)	2x10,4 (2x13,94)	275 (10,83)	530 (20,87)	410 (16,14)	900 (35,43)	90 (3,54)	3750 (147,64)	2800 (110,24)	1950 (76,77)	6273 (13830)
2	2	2x34,5 (2x,9,11)	2x10,4 (2x13,94)	275 (10,83)	550 (21,65)	410 (16,14)	900 (35,43)	90 (3,54)	3750 (147,64)	2800 (110,24)	2050 (80,71)	7673 (16916)
2	2	2x34,5 (2x,9,11)	2x10,4 (2x13,94)	275 (10,83)	530 (20,87)	410 (16,14)	900 (35,43)	90 (3,54)	4250 (167,32)	2800 (110,24)	1950 (76,77)	6786 (14961)
2	2	2x34,5 (2x,9,11)	2x10,4 (2x13,94)	275 (10,83)	550 (21,65)	410 (16,14)	900 (35,43)	90 (3,54)	4250 (167,32)	2800 (110,24)	2050 (80,71)	8186 (18047)
2	2	2x55 (2x,14,53)	2x15,3 (2x,20,5)	275 (10,83)	550 (21,65)	410 (16,14)	900 (35,43)	90 (3,54)	4250 (167,32)	2800 (110,24)	2150 (84,65)	9086 (20031)
2	2	2x55 (2x,14,53)	2x15,3 (2x,20,5)	275 (10,83)	550 (21,65)	410 (16,14)	900 (35,43)	200 (7,87)	4550 (179,13)	2850 (112,20)	2250 (88,58)	11286 (24881)
2	2	2x55 (2x,14,53)	2x15,3 (2x,20,5)	275 (10,83)	550 (21,65)	410 (16,14)	900 (35,43)	220 (8,66)	4550 (179,13)	2900 (114,17)	2350 (92,52)	13886 (30613)
2	2	2x34,5 (2x,9,11)	2x10,4 (2x13,94)	275 (10,83)	550 (21,65)	410 (16,14)	900 (35,43)	90 (3,54)	4900 (192,91)	2800 (110,24)	2150 (84,65)	9400 (20723)
2	2	2x55 (2x,14,53)	2x15,3 (2x,20,5)	275 (10,83)	550 (21,65)	410 (16,14)	900 (35,43)	90 (3,54)	4900 (192,91)	2800 (110,24)	2150 (84,65)	10300 (22708)
2	2	2x55 (2x,14,53)	2x15,3 (2x,20,5)	275 (10,83)	550 (21,65)	410 (16,14)	900 (35,43)	160 (6,30)	5100 (200,79)	2900 (114,17)	2250 (88,58)	12750 (28109)
2	2	2x55 (2x,14,53)	2x15,3 (2x,20,5)	275 (10,83)	550 (21,65)	410 (16,14)	900 (35,43)	200 (7,87)	5100 (200,79)	3000 (118,11)	2350 (95,52)	16500 (36376)
2	2	2x34,5 (2x,9,11)	2x10,4 (2x,13,94)	275 (10,83)	550 (21,65)	410 (16,14)	900 (35,43)	90 (3,54)	5100 (200,79)	2800 (110,24)	2100 (82,68)	10200 (22487)
2	2	2x55 (2x,14,53)	2x15,3 (2x,20,5)	275 (10,83)	550 (21,65)	410 (16,14)	900 (35,43)	90 (3,54)	5100 (200,79)	2850 (112,20)	2150 (84,65)	11250 (24802)
2	2	2x55 (2x,14,53)	2x15,3 (2x,20,5)	275 (10,83)	550 (21,65)	410 (16,14)	900 (35,43)	160 (6,30)	5150 (202,76)	3000 (118,11)	2250 (88,58)	13600 (29983)
2	2	2x55 (2x,14,53)	2x15,3 (2x,20,5)	275 (10,83)	550 (21,65)	410 (16,14)	900 (35,43)	200 (7,87)	5150 (202,76)	3000 (118,11)	2350 (95,52)	17500 (38581)
2	2	2x34,5 (2x,9,11)	2x10,4 (2x13,94)	275 (10,83)	550 (21,65)	410 (16,14)	900 (35,43)	90 (3,54)	5280 (207,87)	2800 (110,24)	2150 (84,65)	10400 (22928)
2	2	2x55 (2x,14,53)	2x15,3 (2x,20,5)	275 (10,83)	550 (21,65)	410 (16,14)	900 (35,43)	90 (3,54)	5280 (207,87)	2800 (110,24)	2150 (84,65)	11500 (25353)
2	2	2x55 (2x,14,53)	2x15,3 (2x,20,5)	275 (10,83)	550 (21,65)	410 (16,14)	900 (35,43)	160 (6,30)	5320 (209,45)	3000 (118,11)	2250 (88,58)	14000 (30865)
2	2	2x55 (2x,14,53)	2x15,3 (2x,20,5)	275 (10,83)	550 (21,65)	410 (16,14)	900 (35,43)	200 (7,87)	5320 (209,45)	3000 (118,11)	2250 (88,58)	18000 (39683)

SPEED-BEND PRO

SYNCHRONIZED HYDRAULIC PRESS BRAKES

High Sensitivity Maximum Productivity

Production time is the most important profit factor for businesses. The Speed Bend series have been designed to reduce the unit time costs and to be your most important power in your business with its fast and quality production capability in a competitive environment.

Movement range of the upper beam and the daylight opening have been increased in the Speed Bend Pro series. Thus, the user is provided as a standard with the possibilities of obtaining deep bends by use of longer dies, taking the bent parts easily from the front side of the machine and easily bending the Z type parts with long boarder by use of high bottom tools.

Realistic 3D modelling

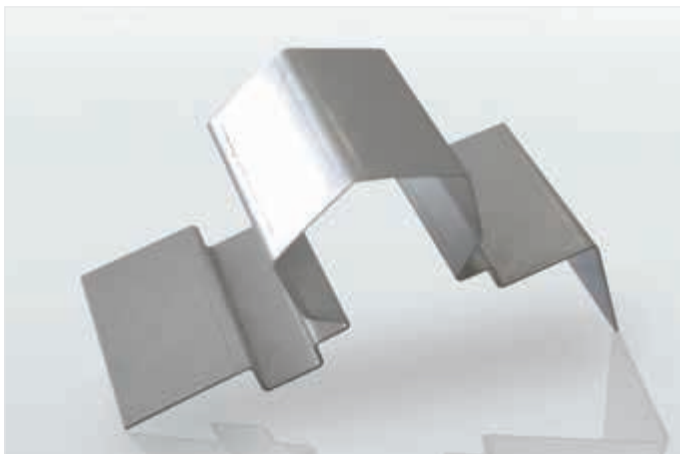
Low energy consumption

Easy service by remote access

Quick and easy tool replacement

Customer focused ergonomic solutions

Backgauge with servo motor



ERGONOMIC DESIGN

Performance of the complex bends easily by means of the 4 axes backgauge that help bending and other accessories saves both time and money.

PRECISE BENDING

The deflection balance can be done with the motor in the most ideal way with the standard motorized crowning system. Thus, precision bendings are obtained.



LOW OPERATION COST

Energy consumption is at minimum level. Cylinders and hydraulic installations that require little maintenance and provide easy use. Therefore, it has low operating cost.

SHORT-TERM DEPRECIATION

It is a profitable investment with its speed and versatility and it can recover its own cost in a short time.

PRECISE PROGRAMMING

Thanks to the HEIDENHAIN linear scales produced in high quality standards in special production facilities, it provides fast, easy, error-free and precise programming.

SLIDING FRONT SUPPORT ARMS

The sliding front support arms having a height adjustment that are dimensioned in the metric system are your greatest help for perfect bends.

SPEED-BEND PRO

GENERAL SPECIFICATIONS



- Height adjustable sliding front support arms with T slot and mm/inch scale (S)



- Wila hydraulic tool holder systems (O)



- The motorized crowning system which communicates with the CNC controller and performs automatic crowning, ensuring that the bended part is at every point and at equal bend angles (S).



- Easy-clamping top tool holder system, with bottom and top tools (O)

STANDARD EQUIPMENT

- Steel body with mono bloc welding of ST44 material which is rigid against bending and high tension
- 6 axes (Y1, Y2, X, R, Z1, Z2)
- CNC controlled backgauge system with 4 axes (X, R, Z1, Z2) AC servo motor
- HOERBIGER hydraulic system
- CNC controlled motorized crowning system
- Top and bottom tools with machined and hardened parts (835 mm length)
- Easy clamping top tool holder system
- Control units; Control units; ER TOUCH EDUTION, DELEM 66T, ER99, CYBELEC VISITOUCH 19, ESA S660W
- 3D graphics color display and offline software
- Electrical panel designed and manufactured from SIEMENS electrical and automation products in accordance with the CE regulations
- Ergonomic and user friendly suspension control panel
- Backlight protection
- Side protection covers
- Y1+Y2 axis synchronization with a tolerance of 0.01 provided by linear scales
- CE compliant foot pedal
- Sliding front support arms with mm/inch scale
- 410 mm throat depth (60 - 320 tons)
- Led light enclosures



- Pneumatic tool clamping systems clamp the tools automatically with the aid of air and center the tools. They are perfect solutions for shortening the start-up time and for the automated press brakes (O)



OPTIONAL EQUIPMENT

- Graphical control units; ER TOUCH EDUTION, DELEM 69T, CYBELEC VISITOUCH 19 MX
- 5, 6 axes backgauge options
- LEUZE light protection system
- AKAS LASER finger protection system
- DSP MCS AP photo electric laser front protection
- Laser angle measurement system
- Hydraulic and hydro-dynamic crowning systems
- Pneumatic top tool holder system
- Hydraulic top and bottom tool holder systems
- CNC controlled automatic bending sheet support arms (AP3+AP4 axes)
- Hydraulic oil cooling and heating systems
- Automatic sliders lubricating system
- Special throat depths (500, 600 and 750 mm and above)
- Special top and bottom tools
- Tool storage cabinet
- Led bar



- AP3, AP4 CNC controlled support arms reduce the bending time significantly and are your biggest help for perfect bends (O)



- Provides time and cost advantages with Multi V or U type adjustable dies (O)



- With colored LED bars, it indicates the location of the bent parts and the bending stations (O)



- The hydraulic top tool clamping system with roller ball bearings inside allows quick and easy tool replacement. Heavy tools can be placed anywhere desired precisely (O)

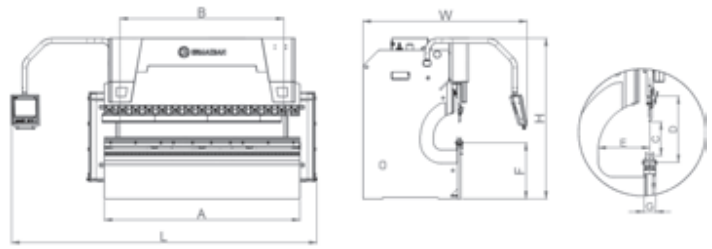


- Fast and precise backgauge systems with 6 axes (X1+X2+R1+R2+Z1+Z2) with servo motor. Allows you to increase production efficiency and quality (O)

TECHNICAL SPECIFICATIONS

TYPE	BENDING LENGTH	BENDING POWER	DISTANCE BETWEEN COLUMNS	Y RAPID SPEED	Y WORKING SPEED	Y RETURN SPEED	CROWNING	TRAVEL IN X AXIS	SPEED OF X AXIS	TRAVEL OF R AXIS	SPEED OF R AXIS	SPEED OF TRAVEL Z1,Z2 AXIS	BACKGAUGE FINGER BLOCKS
	A		B										
	mm (inch)	Ton (tons)	mm (inch)	mm/s (inch/s)	mm/s (inch/s)	mm/s (inch/s)	standard	mm (inch)	mm/s (inch/s)	mm (inch)	mm/s (inch/s)	mm/s (inch/s)	amount
SB PRO 1270-40 (4,17'-44)	1270 (50)	40 (44)	1050 (41,34)	140 (5,51)	10 (0,39)	170 (6,69)	-	500 (19,69)	500 (19,69)	250 (9,84)	350 (13,78)	1000 (39,37)	2
SB PRO 1270-60 (4,17'-66)	1270 (50)	60 (66)	1000 (39,37)	160 (6,30)	10 (0,39)	165 (6,50)	-	500 (19,69)	500 (19,69)	250 (9,84)	350 (13,78)	1000 (39,37)	2
SB PRO 2100-40 (6,89'-44)	2100 (82,68)	40 (44)	1700 (66,93)	140 (5,51)	10 (0,39)	170 (6,69)	Motorized	500 (19,69)	500 (19,69)	250 (9,84)	350 (13,78)	1000 (39,37)	2
SB PRO 2100-60 (6,89'-66)	2100 (82,68)	60 (66)	1700 (66,93)	160 (6,30)	10 (0,39)	165 (6,50)	Motorized	500 (19,69)	500 (19,69)	250 (9,84)	350 (13,78)	1000 (39,37)	2
SB PRO 2600-60 (8,53'-66)	2600 (102,36)	60 (66)	2200 (86,61)	200 (7,87)	10 (0,39)	165 (6,50)	Motorized	500 (19,69)	500 (19,69)	250 (9,84)	350 (13,78)	1000 (39,37)	2
SB PRO 2600-100 (8,53'-110)	2600 (102,36)	100 (110)	2200 (86,61)	200 (7,87)	12 (0,47)	190 (7,48)	Motorized	800 (31,50)	500 (19,69)	250 (9,84)	350 (13,78)	1000 (39,37)	2
SB PRO 2600-135 (8,53'-149)	2600 (102,36)	135 (149)	2200 (86,61)	160 (6,30)	12 (0,47)	190 (7,48)	Motorized	800 (31,50)	500 (19,69)	250 (9,84)	350 (13,78)	1000 (39,37)	2
SB PRO 3100-100 (10,17'-110)	3100 (122,05)	100 (110)	2600 (102,36)	200 (7,87)	12 (0,47)	190 (7,48)	Motorized	800 (31,50)	500 (19,69)	250 (9,84)	350 (13,78)	1000 (39,37)	2
SB PRO 3100-135 (10,17'-149)	3100 (122,05)	135 (149)	2600 (102,36)	200 (7,87)	12 (0,47)	190 (7,48)	Motorized	800 (31,50)	500 (19,69)	250 (9,84)	350 (13,78)	1000 (39,37)	2
SB PRO 3100-175 (10,17'-193)	3100 (122,05)	175 (193)	2600 (102,36)	180 (7,09)	12 (0,47)	190 (7,48)	Motorized	800 (31,50)	500 (19,69)	250 (9,84)	350 (13,78)	1000 (39,37)	2
SB PRO 3100-220 (10,17'-242)	3100 (122,05)	220 (242)	2600 (102,36)	180 (7,09)	10 (0,39)	185 (7,28)	Motorized	800 (31,50)	500 (19,69)	250 (9,84)	350 (13,78)	1000 (39,37)	2
SB PRO 3100-260 (10,17'-286)	3100 (122,05)	260 (286)	2600 (102,36)	140 (5,51)	11 (0,43)	135 (5,31)	Motorized	800 (31,50)	500 (19,69)	250 (9,84)	350 (13,78)	1000 (39,37)	2
SB PRO 3100-320 (10,17'-352)	3100 (122,05)	320 (352)	2600 (102,36)	140 (5,51)	10,5 (0,41)	150 (5,91)	Motorized	800 (31,50)	500 (19,69)	250 (9,84)	350 (13,78)	1000 (39,37)	2
SB PRO 3100-400 (10,17'-440)	3100 (122,05)	400 (440)	2550 (100,36)	110 (4,33)	8,4 (0,33)	130 (5,12)	Motorized	800 (31,50)	500 (19,69)	250 (9,84)	350 (13,78)	1000 (39,37)	2
SB PRO 3100-500 (10,17'-550)	3100 (122,05)	500 (550)	2450 (96,46)	80 (3,15)	7,4 (0,29)	65 (2,56)	Motorized	800 (31,50)	500 (19,69)	250 (9,84)	350 (13,78)	1000 (39,37)	2
SB PRO 3760-135 (12,34'-149)	3760 (148,03)	135 (149)	3250 (127,95)	200 (7,87)	12 (0,47)	190 (7,48)	Motorized	800 (31,50)	500 (19,69)	250 (9,84)	350 (13,78)	1000 (39,37)	2
SB PRO 3760-175 (12,34'-193)	3760 (148,03)	175 (193)	3250 (127,95)	180 (7,09)	12 (0,47)	190 (7,48)	Motorized	800 (31,50)	500 (19,69)	250 (9,84)	350 (13,78)	1000 (39,37)	2
SB PRO 3760-220 (12,34'-242)	3760 (148,03)	220 (242)	3250 (127,95)	180 (7,09)	10 (0,39)	185 (7,28)	Motorized	800 (31,50)	500 (19,69)	250 (9,84)	350 (13,78)	1000 (39,37)	2
SB PRO 3760-260 (12,34'-286)	3760 (148,03)	260 (286)	3250 (127,95)	140 (5,51)	11 (0,43)	135 (5,31)	Motorized	800 (31,50)	500 (19,69)	250 (9,84)	350 (13,78)	1000 (39,37)	2
SB PRO 3760-320 (12,34'-352)	3760 (148,03)	320 (352)	3250 (127,95)	140 (5,51)	10,5 (0,41)	150 (5,91)	Motorized	800 (31,50)	500 (19,69)	250 (9,84)	350 (13,78)	1000 (39,37)	2
SB PRO 4100-135 (13,45'-149)	4100 (161,42)	135 (149)	3600 (141,73)	200 (7,87)	12 (0,47)	190 (7,48)	Motorized	800 (31,50)	500 (19,69)	250 (9,84)	350 (13,78)	1000 (39,37)	2
SB PRO 4100-175 (13,45'-193)	4100 (161,42)	175 (193)	3600 (141,73)	180 (7,09)	12 (0,47)	190 (7,48)	Motorized	800 (31,50)	500 (19,69)	250 (9,84)	350 (13,78)	1000 (39,37)	2
SB PRO 4100-220 (13,45'-242)	4100 (161,42)	220 (242)	3600 (141,73)	180 (7,09)	10 (0,39)	185 (7,28)	Motorized	800 (31,50)	500 (19,69)	250 (9,84)	350 (13,78)	1000 (39,37)	2
SB PRO 4100-260 (13,45'-286)	4100 (161,42)	260 (286)	3600 (141,73)	140 (5,51)	11 (0,43)	135 (5,31)	Motorized	800 (31,50)	500 (19,69)	250 (9,84)	350 (13,78)	1000 (39,37)	2
SB PRO 4100-320 (13,45'-352)	4100 (161,42)	320 (352)	3600 (141,73)	140 (5,51)	10,5 (0,41)	150 (5,91)	Motorized	800 (31,50)	500 (19,69)	250 (9,84)	350 (13,78)	1000 (39,37)	2
SB PRO 4100-400 (13,45'-440)	4100 (161,42)	400 (440)	3550 (139,76)	110 (4,33)	8,4 (0,33)	130 (5,12)	Motorized	800 (31,50)	500 (19,69)	250 (9,84)	350 (13,78)	1000 (39,37)	2
SB PRO 4100-500 (13,45'-550)	4100 (161,42)	500 (550)	3400 (133,86)	80 (3,15)	7,4 (0,29)	65 (2,56)	Motorized	800 (31,50)	500 (19,69)	250 (9,84)	350 (13,78)	1000 (39,37)	2
SB PRO 4100-600 (13,45'-660)	4100 (161,42)	600 (660)	3400 (133,86)	80 (3,15)	8,3 (0,33)	75 (2,95)	Motorized	800 (31,50)	500 (19,69)	250 (9,84)	350 (13,78)	1000 (39,37)	2
SB PRO 4100-1250 (13,45'-1375)	4100 (161,42)	1250 (1375)	3000 (118,11)	70 (2,76)	6 (0,24)	80 (3,15)	Motorized	1000 (39,37)	500 (19,69)	250 (9,84)	350 (13,78)	1000 (39,37)	2
SB PRO 4100-1500 (13,45'-1650)	4100 (161,42)	1500 (1650)	2900 (114,17)	70 (2,76)	5,5 (0,22)	80 (3,15)	Motorized	1000 (39,37)	500 (19,69)	250 (9,84)	350 (13,78)	1000 (39,37)	2
SB PRO 4270-135 (14'-149)	4270 (168,11)	135 (149)	3780 (148,82)	200 (7,87)	12 (0,47)	190 (7,48)	Motorized	800 (31,50)	500 (19,69)	250 (9,84)	350 (13,78)	1000 (39,37)	2
SB PRO 4270-175 (14'-193)	4270 (168,11)	175 (193)	3780 (148,82)	180 (7,09)	12 (0,47)	190 (7,48)	Motorized	800 (31,50)	500 (19,69)	250 (9,84)	350 (13,78)	1000 (39,37)	2
SB PRO 4270-220 (14'-242)	4270 (168,11)	220 (242)	3780 (148,82)	180 (7,09)	10 (0,39)	185 (7,28)	Motorized	800 (31,50)	500 (19,69)	250 (9,84)	350 (13,78)	1000 (39,37)	2
SB PRO 4270-260 (14'-286)	4270 (168,11)	260 (286)	3780 (148,82)	140 (5,51)	11 (0,43)	135 (5,31)	Motorized	800 (31,50)	500 (19,69)	250 (9,84)	350 (13,78)	1000 (39,37)	2
SB PRO 4270-320 (14'-352)	4270 (168,11)	320 (352)	3780 (148,82)	140 (5,51)	10,5 (0,41)	150 (5,91)	Motorized	800 (31,50)	500 (19,69)	250 (9,84)	350 (13,78)	1000 (39,37)	2
SB PRO 4270-400 (14'-440)	4270 (168,11)	400 (440)	3780 (148,82)	110 (4,33)	8,4 (0,33)	130 (5,12)	Motorized	800 (31,50)	500 (19,69)	250 (9,84)	350 (13,78)	1000 (39,37)	2
SB PRO 4270-600 (14'-660)	4270 (168,11)	600 (660)	3600 (141,73)	80 (3,15)	8,3 (0,33)	75 (2,95)	Motorized	800 (31,50)	500 (19,69)	250 (9,84)	350 (13,78)	1000 (39,37)	2
SB PRO 6100-220 (20,01'-242)	6100 (240,16)	220 (242)	5100 (200,79)	130 (5,12)	11 (0,43)	125 (4,92)	Motorized	800 (31,50)	500 (19,69)	250 (9,84)	350 (13,78)	1000 (39,37)	4
SB PRO 6100-320 (20,01'-352)	6100 (240,16)	320 (352)	5100 (200,79)	80 (3,15)	10,5 (0,41)	75 (2,95)	Motorized	800 (31,50)	500 (19,69)	250 (9,84)	350 (13,78)	1000 (39,37)	4
SB PRO 6100-400 (20,01'-440)	6100 (240,16)	400 (440)	5100 (200,79)	80 (3,15)	8,4 (0,33)	65 (2,56)	Motorized	800 (31,50)	500 (19,69)	250 (9,84)	350 (13,78)	1000 (39,37)	4
SB PRO 6100-500 (20,01'-550)	6100 (240,16)	500 (550)	5100 (200,79)	80 (3,15)	7,4 (0,29)	65 (2,55)	Motorized	800 (31,50)	500 (19,69)	250 (9,84)	350 (13,78)	1000 (39,37)	4
SB PRO 6100-600 (20,01'-660)	6100 (240,16)	600 (660)	5100 (200,79)	80 (3,15)	8,3 (0,33)	75 (2,95)	Motorized	800 (31,50)	500 (19,69)	250 (9,84)	350 (13,78)	1000 (39,37)	4

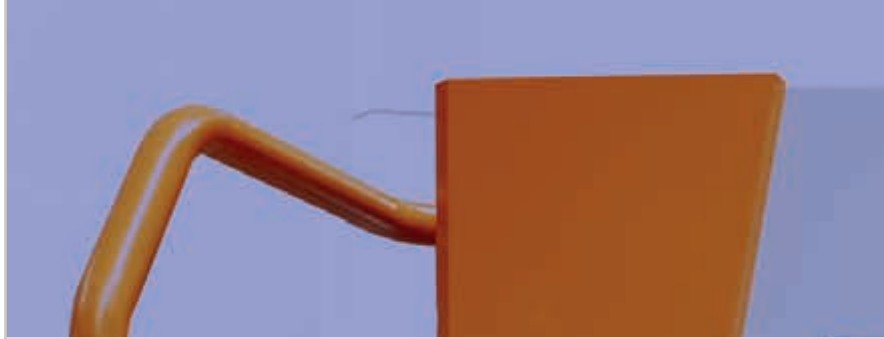
* Bending speed can not exceed 10mm/sec (0,39inc/sec) according to the CE regulations.



NUMBER OF SHEET SUPPORT	OIL CAPACITY	MOTOR POWER	STROKE	DAYLIGHT	THROAT DEPTH	TABLE HEIGHT	TABLE WIDTH	LENGTH	HEIGHT	WIDTH	WEIGHT	OPTIONAL	
												SPEED OF TRAVEL X1, X2 AXIS	SPEED OF TRAVEL R1, R2 AXIS
amount	lt. (us gallons)	kW (hp)	mm (inch)	mm (inch)	mm (inch)	mm (inch)	mm (inch)	mm (inch)	mm (inch)	mm (inch)	kg. (lbr.)	mm/s (inch/s)	mm/s (inch/s)
2	80 (21,14)	5,5 (7,38)	170 (6,69)	387 (15,22)	350 (13,78)	850 (33,46)	90 (3,54)	2750 (108,27)	2155 (84,84)	2010 (79,13)	3220 (7100)	500 (19,69)	350 (13,78)
2	150 (39,63)	7,5 (10,06)	275 (10,83)	530 (20,87)	410 (16,14)	900 (35,43)	90 (3,54)	3175 (125,0)	2580 (101,57)	2100 (82,68)	4320 (9526)	500 (19,69)	350 (13,78)
2	80 (21,14)	5,5 (7,38)	170 (6,69)	387 (15,22)	350 (13,78)	850 (33,46)	90 (3,54)	3600 (141,73)	2200 (86,61)	2100 (82,68)	3885 (8566)	500 (19,69)	350 (13,78)
2	150 (39,63)	7,5 (10,06)	275 (10,83)	530 (20,87)	410 (16,14)	900 (35,43)	90 (3,54)	4015 (158,07)	2580 (101,57)	1870 (73,62)	5085 (11212)	500 (19,69)	350 (13,78)
2	150 (39,63)	7,5 (10,06)	275 (10,83)	530 (20,87)	410 (16,14)	900 (35,43)	90 (3,54)	4450 (175,20)	2580 (101,57)	1800 (70,87)	5700 (12569)	500 (19,69)	350 (13,78)
2	200 (52,84)	11 (14,75)	275 (10,83)	530 (20,87)	410 (16,14)	900 (35,43)	90 (3,54)	4350 (171,26)	2550 (100,39)	2500 (98,43)	6273 (13832)	500 (19,69)	350 (13,78)
2	300 (79,26)	15 (20,12)	275 (10,83)	550 (21,65)	410 (16,14)	900 (35,43)	90 (3,54)	4425 (174,21)	2800 (110,24)	2100 (82,68)	7673 (16919)	500 (19,69)	350 (13,78)
2	200 (52,84)	11 (14,75)	275 (10,83)	530 (20,87)	410 (16,14)	900 (35,43)	90 (3,54)	4970 (195,67)	2550 (100,39)	2480 (97,64)	6786 (14963)	500 (19,69)	350 (13,78)
2	300 (79,26)	15 (20,12)	275 (10,83)	550 (21,65)	410 (16,14)	900 (35,43)	90 (3,54)	4900 (192,91)	2650 (104,33)	2150 (84,65)	8186 (18050)	500 (19,69)	350 (13,78)
2	300 (79,26)	15 (20,12)	275 (10,83)	550 (21,65)	410 (16,14)	900 (35,43)	90 (3,54)	5025 (197,83)	2680 (105,51)	2150 (84,65)	9086 (20035)	500 (19,69)	350 (13,78)
2	300 (79,26)	18,5 (24,81)	275 (10,83)	550 (21,65)	410 (16,14)	900 (35,43)	200 (7,87)	5050 (198,82)	2700 (106,30)	2250 (88,58)	11286 (24886)	500 (19,69)	350 (13,78)
2	300 (79,26)	22 (29,50)	275 (10,83)	550 (21,65)	410 (16,14)	900 (35,43)	220 (8,66)	5050 (198,82)	3065 (120,67)	2265 (89,17)	13886 (30619)	500 (19,69)	350 (13,78)
2	400 (105,68)	30 (40,23)	375 (14,76)	650 (25,59)	410 (16,14)	900 (35,43)	240 (9,45)	5075 (199,80)	3365 (132,48)	2450 (96,46)	16840 (37132)	500 (19,69)	350 (13,78)
2	400 (105,68)	30 (40,23)	375 (14,76)	650 (25,59)	510 (20,08)	1000 (39,37)	240 (9,45)	5315 (209,25)	3500 (137,80)	2670 (105,12)	20710 (45666)	500 (19,69)	350 (13,78)
2	500 (132,10)	30 (40,23)	375 (14,76)	675 (26,57)	510 (20,08)	1020 (40,16)	240 (9,45)	5350 (210,63)	4040 (159,06)	2820 (111,02)	27533 (60710)	500 (19,69)	350 (13,78)
2	300 (79,26)	15 (20,12)	275 (10,83)	550 (21,65)	410 (16,14)	900 (35,43)	90 (3,54)	5560 (218,90)	2650 (104,33)	2150 (84,65)	9400 (20727)	500 (19,69)	350 (13,78)
2	300 (79,26)	15 (20,12)	275 (10,83)	550 (21,65)	410 (16,14)	900 (35,43)	90 (3,54)	5560 (218,90)	2930 (115,35)	2150 (84,65)	10300 (22712)	500 (19,69)	350 (13,78)
2	300 (79,26)	18,5 (24,81)	275 (10,83)	550 (21,65)	410 (16,14)	900 (35,43)	160 (6,30)	5700 (224,41)	2710 (106,69)	2300 (90,55)	12750 (28114)	500 (19,69)	350 (13,78)
2	300 (79,26)	22 (29,50)	275 (10,83)	550 (21,65)	410 (16,14)	900 (35,43)	200 (7,87)	5710 (224,80)	3065 (120,67)	2265 (89,17)	16500 (36383)	500 (19,69)	350 (13,78)
2	400 (105,68)	30 (40,23)	375 (14,76)	650 (25,59)	410 (16,14)	900 (35,43)	220 (8,66)	5800 (228,35)	3365 (132,48)	2520 (99,21)	20150 (44431)	500 (19,69)	350 (13,78)
2	300 (79,26)	15 (20,12)	275 (10,83)	550 (21,65)	410 (16,14)	900 (35,43)	90 (3,54)	6000 (236,22)	2660 (104,72)	2160 (85,04)	10200 (22491)	500 (19,69)	350 (13,78)
2	300 (79,26)	15 (20,12)	275 (10,83)	550 (21,65)	410 (16,14)	900 (35,43)	90 (3,54)	6080 (239,37)	2680 (105,51)	2200 (86,61)	11250 (24806)	500 (19,69)	350 (13,78)
2	300 (79,26)	18,5 (24,81)	275 (10,83)	550 (21,65)	410 (16,14)	900 (35,43)	160 (6,30)	6100 (240,16)	2770 (109,06)	2300 (90,55)	13600 (29988)	500 (19,69)	350 (13,78)
2	300 (79,26)	22 (29,50)	275 (10,83)	550 (21,65)	410 (16,14)	900 (35,43)	200 (7,87)	6150 (242,13)	3070 (120,87)	2400 (94,49)	17500 (38588)	500 (19,69)	350 (13,78)
2	400 (105,68)	30 (40,23)	375 (14,76)	650 (25,59)	410 (16,14)	900 (35,43)	220 (8,66)	6200 (244,09)	3400 (133,86)	2550 (100,39)	21800 (48069)	500 (19,69)	350 (13,78)
2	400 (105,68)	30 (40,23)	375 (14,76)	650 (25,59)	510 (20,08)	1000 (39,37)	240 (9,45)	6250 (246,06)	3550 (139,76)	2700 (106,30)	26100 (57551)	500 (19,69)	350 (13,78)
2	500 (132,10)	30 (40,23)	375 (14,76)	675 (26,57)	510 (20,08)	1100 (43,31)	240 (9,45)	6300 (248,03)	4100 (161,42)	2700 (106,30)	32331 (71290)	500 (19,69)	350 (13,78)
2	500 (132,10)	37 (49,62)	375 (14,76)	675 (26,57)	510 (20,08)	900 (35,43)	240 (9,45)	6300 (248,03)	4422 (174,09)	2750 (108,27)	36231 (79889)	500 (19,69)	350 (13,78)
2	1200 (317,04)	55 (73,76)	510 (20,08)	1000 (39,37)	610 (24,02)	800 (31,50)	440 (17,32)	6400 (251,97)	5280 (207,87)	3300 (129,92)	77341 (170537)	500 (19,69)	350 (13,78)
2	1500 (396,30)	75 (100,58)	610 (24,02)	1100 (43,31)	610 (24,02)	800 (31,50)	480 (18,90)	6500 (255,91)	5400 (212,60)	3700 (145,67)	92070 (203014)	500 (19,69)	350 (13,78)
2	300 (79,26)	15 (20,12)	275 (10,83)	550 (21,65)	410 (16,14)	900 (35,43)	90 (3,54)	6170 (242,91)	2600 (102,36)	2160 (85,04)	10400 (22932)	500 (19,69)	350 (13,78)
2	300 (79,26)	15 (20,12)	275 (10,83)	550 (21,65)	410 (16,14)	900 (35,43)	90 (3,54)	6250 (246,06)	2680 (105,51)	2200 (86,61)	11500 (25358)	500 (19,69)	350 (13,78)
2	300 (79,26)	18,5 (24,81)	275 (10,83)	550 (21,65)	410 (16,14)	900 (35,43)	160 (6,30)	6270 (246,85)	3000 (118,11)	2250 (88,58)	14000 (30870)	500 (19,69)	350 (13,78)
2	300 (79,26)	22 (29,50)	275 (10,83)	550 (21,65)	410 (16,14)	900 (35,43)	200 (7,87)	6320 (248,82)	3070 (120,87)	2400 (94,49)	18000 (39690)	500 (19,69)	350 (13,78)
2	400 (105,68)	30 (40,23)	375 (14,76)	650 (25,59)	410 (16,14)	900 (35,43)	220 (8,66)	6400 (251,97)	3420 (134,65)	2550 (100,39)	22600 (49833)	500 (19,69)	350 (13,78)
2	400 (105,68)	30 (40,23)	375 (14,76)	650 (25,59)	510 (20,08)	1000 (39,37)	240 (9,45)	6450 (253,94)	3500 (137,80)	2710 (106,69)	26631 (58721)	500 (19,69)	350 (13,78)
2	500 (132,10)	37 (49,62)	375 (14,76)	675 (26,57)	510 (20,08)	900 (35,43)	240 (9,45)	6100 (240,16)	3700 (145,67)	2650 (104,33)	36982 (81545)	500 (19,69)	350 (13,78)
4	300 (79,26)	18,5 (24,81)	275 (10,83)	550 (21,65)	410 (16,14)	1100 (43,31)	180 (7,09)	7750 (305,12)	3000 (118,11)	2260 (88,98)	24828 (54746)	500 (19,69)	350 (13,78)
4	400 (105,68)	30 (40,23)	375 (14,76)	650 (25,59)	410 (16,14)	1100 (43,31)	180 (7,09)	8150 (320,87)	3565 (140,35)	2600 (102,36)	30400 (67032)	500 (19,69)	350 (13,78)
4	400 (105,68)	30 (40,23)	375 (14,76)	650 (25,59)	510 (20,08)	1100 (43,31)	200 (7,87)	8150 (320,87)	3750 (147,64)	2700 (106,30)	36000 (79380)	500 (19,69)	350 (13,78)
4	500 (132,10)	30 (40,23)	375 (14,76)	675 (26,57)	510 (20,08)	900 (35,43)	240 (9,45)	8200 (322,83)	3900 (153,54)	2650 (104,33)	41500 (91,508)	500 (19,69)	350 (13,78)
4	500 (132,10)	37 (49,62)	375 (14,76)	675 (26,57)	510 (20,08)	900 (35,43)	240 (9,45)	8200 (322,83)	3900 (153,54)	2650 (104,33)	47200 (104076)	500 (19,69)	350 (13,78)

POWER BEND FALCON

SYNCHRONIZED HYDRAULIC
PRESS BRAKE



Stronger, Faster And Deeper Bends...

Power-Bend Falcon Series machines redesigned based on users preferences to become a unique machine with its individual electronic and mechanical features.

Power-Bend Falcon Series are among the highest rated machines which will help you increase your productivity and keep costs at minimum level with its user friendly CNC controller and low cost hydraulic maintenance.

New Power-Bend Falcon is exactly what you need for your accurate single, or complicated multiple bend productions.

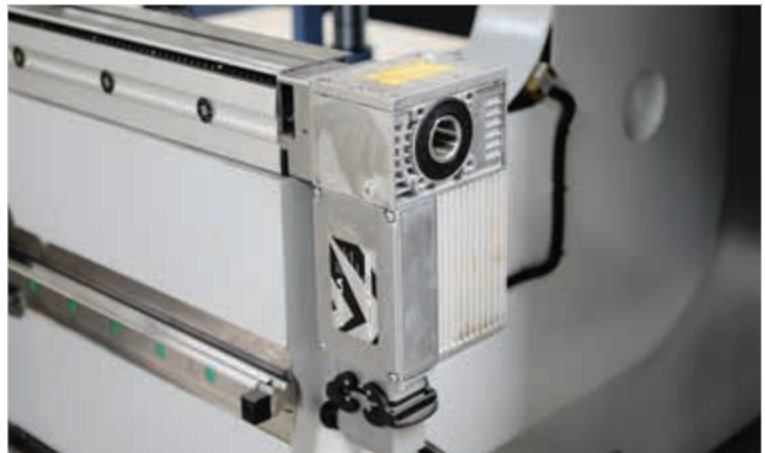
4 axes Y1, Y2, X, R

Motorized crowning system

Laser finger front protection

2D graphical touch screen CNC

Rigid body



MOTORIZED CROWNING SYSTEM

CNC crowning system that communicates with the CNC controller, performs crowning automatically and enables the part to be at even bending angle at any given point.

FINGER PROTECTION LASER SAFETY

Laser safety units that is produced specially for press brakes and is the leader among safety systems. Laser safe keeps the operator's safety at the top level.



QUICK RELEASE PROMECAM TOOL CLAMPING SYSTEM

Promecam type top tool clamping system which provides quick tool change can easily be loaded & unloaded.

DELEM 58T CONTROLLER

15" High Resolution TFT 2D Graphical Touch Screen Delem 58T controls maximum 4 Axis and also allows to control motorized crowning system and calculate bending steps automatically.

BACKGAUGE SYSTEM

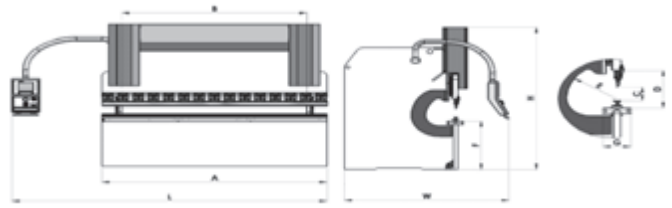
Power-Bend Falcon offers you 2 Axis (X and R) motorized back gauge system as standard. X and R Axis movements are precise by accurate servo motors mounted on back gauge system.



TECHNICAL SPECIFICATIONS

TYPE	BENDING LENGTH	BENDING POWER	DISTANCE BETWEEN COLUMNS	Y RAPID SPEED	Y WORKING SPEED	Y RETURN SPEED	CROWNING	TRAVEL IN X AXIS	SPEED OF X AXIS	TRAVEL OF R AXIS	SPEED OF R AXIS	BACKGAUGE FINGER BLOCKS
	A		B									
	mm (inch)	Ton (tons)	mm (inch)	mm/s (inch/s)	mm/s (inch/s)	mm/s (inch/s)	standard	mm (inch)	mm/s (inch/s)	mm (inch)	mm/s (inch/s)	amount
PB FALCON 1270-40 (4,17'-44)	1270 (50)	40(44)	1050 (41,3)	140 (5,51)	10 (0,39)	170 (6,69)	-	500 (19,7)	500 (19,7)	250 (9,8)	350 (13,8)	2
PB FALCON 1270-60 (4,17'-66)	1270 (50)	60 (66)	1000 (39,4)	160 (6,30)	10 (0,39)	165 (6,50)	-	500 (19,7)	500 (19,7)	250 (9,8)	350 (13,8)	2
PB FALCON 2100-40 (6,89'-44)	2100 (83)	40 (44)	1700 (66,9)	140 (5,51)	10 (0,39)	170 (6,69)	Motorized	500 (19,7)	500 (19,7)	250 (9,8)	350 (13,8)	2
PB FALCON 2100-60 (6,89'-66)	2100 (83)	60 (66)	1700 (66,9)	160 (6,30)	10 (0,39)	165 (6,50)	Motorized	500 (19,7)	500 (19,7)	250 (9,8)	350 (13,8)	2
PB FALCON 2600-60 (8,53'-66)	2600 (102)	60 (66)	2200 (86,6)	200 (7,87)	10 (0,39)	165 (6,50)	Motorized	500 (19,7)	500 (19,7)	250 (9,8)	350 (13,8)	2
PB FALCON 2600-100 (8,53'-110)	2600 (102)	100 (110)	2200 (86,6)	200 (7,87)	9,5 (0,37)	155 (6,10)	Motorized	800 (31,5)	500 (19,7)	250 (9,8)	350 (13,8)	2
PB FALCON 2600-135 (8,53'-149)	2600 (102)	135 (149)	2200 (86,6)	160 (6,30)	10 (0,39)	120 (4,72)	Motorized	800 (31,5)	500 (19,7)	250 (9,8)	350 (13,8)	2
PB FALCON 3100-100 (10,17'-110)	3100 (122)	100 (110)	2600 (102,4)	200 (7,87)	9,5 (0,37)	155 (6,10)	Motorized	800 (31,5)	500 (19,7)	250 (9,8)	350 (13,8)	2
PB FALCON 3100-135 (10,17'-149)	3100 (122)	135 (149)	2600 (102,4)	200 (7,87)	10 (0,39)	120 (4,72)	Motorized	800 (31,5)	500 (19,7)	250 (9,8)	350 (13,8)	2
PB FALCON 3100-175 (10,17'-193)	3100 (122)	175 (193)	2600 (102,4)	180 (7,09)	10 (0,39)	135 (5,31)	Motorized	800 (31,5)	500 (19,7)	250 (9,8)	350 (13,8)	2
PB FALCON 3100-220 (10,17'-242)	3100 (122)	220 (242)	2600 (102,4)	180 (7,09)	10 (0,39)	160 (6,30)	Motorized	800 (31,5)	500 (19,7)	250 (9,8)	350 (13,8)	2
PB FALCON 3100-260 (10,17'-286)	3100 (122)	260 (286)	2600 (102,4)	140 (5,51)	10 (0,39)	135 (5,31)	Motorized	800 (31,5)	500 (19,7)	250 (9,8)	350 (13,8)	2
PB FALCON 3100-320 (10,17'-352)	3100 (122)	320 (352)	2600 (102,4)	140 (5,51)	10 (0,39)	150 (5,91)	Motorized	800 (31,5)	500 (19,7)	250 (9,8)	350 (13,8)	2
PB FALCON 3100-400 (10,17'-440)	3100 (122)	400 (440)	2550 (100,4)	110 (4,33)	8,4	130 (5,12)	Motorized	800 (31,5)	500 (19,7)	250 (9,8)	350 (13,8)	2
PB FALCON 3760-135 (12,34'-149)	3760 (148)	135 (149)	3250 (128,0)	200 (7,37)	10 (0,39)	120 (4,72)	Motorized	800 (31,5)	500 (19,7)	250 (9,8)	350 (13,8)	2
PB FALCON 3760-175 (12,34'-193)	3760 (148)	175 (193)	3250 (128,0)	180 (7,09)	10 (0,39)	135 (5,31)	Motorized	800 (31,5)	500 (19,7)	250 (9,8)	350 (13,8)	2
PB FALCON 3760-220 (12,34'-242)	3760 (148)	220 (242)	3250 (128,0)	180 (7,09)	10 (0,39)	160 (6,30)	Motorized	800 (31,5)	500 (19,7)	250 (9,8)	350 (13,8)	2
PB FALCON 3760-260 (12,34'-286)	3760 (148)	260 (286)	3250 (128,0)	140 (5,51)	10 (0,39)	135 (5,31)	Motorized	800 (31,5)	500 (19,7)	250 (9,8)	350 (13,8)	2
PB FALCON 3760-320 (12,34'-352)	3760 (148)	320 (352)	3250 (128,0)	140 (5,51)	10 (0,39)	150 (5,91)	Motorized	800 (31,5)	500 (19,7)	250 (9,8)	350 (13,8)	2
PB FALCON 4100-135 (13,45'-149)	4100 (161)	135 (149)	3600 (141,7)	200 (7,87)	10 (0,39)	120 (4,72)	Motorized	800 (31,5)	500 (19,7)	250 (9,8)	350 (13,8)	2
PB FALCON 4100-175 (13,45'-193)	4100 (161)	175 (193)	3600 (141,7)	180 (7,09)	10 (0,39)	135 (5,31)	Motorized	800 (31,5)	500 (19,7)	250 (9,8)	350 (13,8)	2
PB FALCON 4100-220 (13,45'-242)	4100 (161)	220 (242)	3600 (141,7)	180 (7,09)	10 (0,39)	160 (6,30)	Motorized	800 (31,5)	500 (19,7)	250 (9,8)	350 (13,8)	2
PB FALCON 4100-260 (13,45'-286)	4100 (161)	260 (286)	3600 (141,7)	140 (5,51)	10 (0,39)	135 (5,31)	Motorized	800 (31,5)	500 (19,7)	250 (9,8)	350 (13,8)	2
PB FALCON 4100-320 (13,45'-352)	4100 (161)	320 (352)	3600 (141,7)	140 (5,51)	10 (0,39)	150 (5,91)	Motorized	800 (31,5)	500 (19,7)	250 (9,8)	350 (13,8)	2
PB FALCON 4100-400 (13,45'-440)	4100 (161)	400 (440)	3550 (139,8)	110 (4,33)	8,4 (0,33)	130 (5,12)	Motorized	800 (31,5)	500 (19,7)	250 (9,8)	350 (13,8)	2
PB FALCON 4270-135 (14,01'-149)	4270 (168)	135 (149)	3780 (148,8)	200 (7,87)	10 (0,39)	120 (4,72)	Motorized	800 (31,5)	500 (19,7)	250 (9,8)	350 (13,8)	2
PB FALCON 4270-175 (14,01'-193)	4270 (168)	175 (193)	3780 (148,8)	180 (7,09)	10 (0,39)	135 (5,31)	Motorized	800 (31,5)	500 (19,7)	250 (9,8)	350 (13,8)	2
PB FALCON 4270-220 (14,01'-242)	4270 (168)	220 (242)	3780 (148,8)	180 (7,09)	10 (0,39)	160 (6,30)	Motorized	800 (31,5)	500 (19,7)	250 (9,8)	350 (13,8)	2
PB FALCON 4270-260 (14,01'-286)	4270 (168)	260 (286)	3780 (148,8)	140 (5,51)	10 (0,39)	135 (5,31)	Motorized	800 (31,5)	500 (19,7)	250 (9,8)	350 (13,8)	2
PB FALCON 4270-320 (14,01'-352)	4270 (168)	320 (352)	3780 (148,8)	140 (5,51)	10 (0,39)	150 (5,91)	Motorized	800 (31,5)	500 (19,7)	250 (9,8)	350 (13,8)	2
PB FALCON 4270-400 (14,01'-440)	4270 (168)	400 (440)	3780 (148,8)	110 (4,33)	8,4 (0,33)	130 (5,12)	Motorized	800 (31,5)	500 (19,7)	250 (9,8)	350 (13,8)	2
PB FALCON 6100-220 (20,01'-242)	6100 (240)	220 (242)	5100 (200,8)	130 (5,12)	10 (0,39)	125 (4,92)	Motorized	800 (31,5)	500 (19,7)	250 (9,8)	350 (13,8)	4
PB FALCON 6100-320 (20,01'-352)	6100 (240)	320 (352)	5100 (200,8)	80 (3,15)	10 (0,39)	75 (2,95)	Motorized	800 (31,5)	500 (19,7)	250 (9,8)	350 (13,8)	4
PB FALCON 6100-400 (20,01'-440)	6100 (240)	400 (440)	5100 (200,8)	80 (3,15)	8,4 (0,33)	65 (2,26)	Motorized	800 (31,5)	500 (19,7)	250 (9,8)	350 (13,8)	4

* Bending speed can not exceed 10mm/sec (0,39inc/sec) according to the CE regulations.



NUMBER OF SHEET SUPPORT	OIL CAPACITY	MOTOR POWER	STROKE	DAYLIGHT	THROAT DEPTH	TABLE HEIGHT	TABLE WIDTH	LENGTH	HEIGHT	WIDTH	WEIGHT
			C	D	E	F	G	L	H	W	
amount	lt. (us gallons)	kW (hp)	mm (inch)	mm (inch)	mm (inch)	mm (inch)	mm (inch)	mm (inch)	mm (inch)	mm (inch)	kg. (lbr.)
2	80 (21,1)	5,5 (7,4)	170 (6,7)	387 (15,2)	350 (13,8)	850 (33,5)	90 (3,54)	2750 (108,3)	2155 (84,8)	2010 (79,1)	3220 (7100)
2	150 (39,6)	7,5 (10,1)	275 (10,8)	530 (20,9)	410 (16,1)	900 (35,4)	90 (3,54)	3175 (125,0)	2580 (101,6)	2100 (82,7)	4320 (9526)
2	80 (21,1)	5,5 (7,4)	170 (6,7)	387 (15,2)	350 (13,8)	850 (33,5)	90 (3,54)	3600 (141,7)	2200 (86,6)	2100 (82,7)	3885 (8566)
2	150 (39,6)	7,5 (10,1)	275 (10,8)	530 (20,9)	410 (16,1)	900 (35,4)	90 (3,54)	4015 (158,1)	2580 (101,6)	1870 (73,6)	5085 (11212)
2	150 (39,6)	7,5 (10,1)	275 (10,8)	530 (20,9)	410 (16,1)	900 (35,4)	90 (3,54)	4450 (175,2)	2580 (101,6)	1800 (70,6)	5700 (12569)
2	150 (39,6)	7,5 (10,1)	275 (10,8)	530 (20,9)	410 (16,1)	900 (35,4)	90 (3,54)	4350 (171,3)	2550 (100,4)	2500 (98,4)	6273 (13832)
2	200 (52,8)	11 (14,8)	275 (10,8)	550 (21,7)	410 (16,1)	900 (35,4)	90 (3,54)	4425 (174,2)	2800 (110,2)	2100 (82,7)	7673 (16919)
2	150 (39,6)	7,5 (10,1)	275 (10,8)	530 (20,9)	410 (16,1)	900 (35,4)	90 (3,54)	4970 (195,7)	2550 (100,4)	2480 (97,6)	6786 (14963)
2	200 (52,8)	11 (14,8)	275 (10,8)	550 (21,7)	410 (16,1)	900 (35,4)	90 (3,54)	4900 (192,9)	2650 (104,3)	2150 (84,6)	8186 (18050)
2	200 (52,8)	15 (20,1)	275 (10,8)	550 (21,7)	410 (16,1)	900 (35,4)	90 (3,54)	5025 (197,8)	2680 (105,5)	2150 (84,6)	9086 (20035)
2	300 (79,3)	18,5 (24,8)	275 (10,8)	550 (21,7)	410 (16,1)	900 (35,4)	200 (7,87)	5050 (198,8)	2700 (106,3)	2250 (88,6)	11286 (24886)
2	300 (79,3)	22 (29,5)	275 (10,8)	550 (21,7)	410 (16,1)	900 (35,4)	220 (8,66)	4550 (179,1)	2900 (114,2)	2350 (92,5)	13886 (30619)
2	400 (105,7)	30 (40,2)	375 (14,8)	650 (25,6)	410 (16,1)	900 (35,4)	240 (9,45)	4550 (179,1)	3200 (126,0)	2450 (96,5)	16840 (37132)
2	400 (105,7)	30 (40,2)	375 (14,8)	650 (25,6)	510 (20,1)	1000 (39,4)	240 (9,45)	4550 (179,1)	3470 (136,6)	2650 (104,3)	20710 (45666)
2	200 (52,8)	11 (14,8)	275 (10,8)	550 (21,7)	410 (16,1)	900 (35,4)	90 (3,54)	5560 (218,9)	2650 (104,3)	2150 (84,6)	9400 (20727)
2	200 (52,8)	15 (20,1)	275 (10,8)	550 (21,7)	410 (16,1)	900 (35,4)	90 (3,54)	5560 (218,9)	2930 (115,4)	2150 (84,6)	10300 (22712)
2	300 (79,3)	18,5 (24,8)	275 (10,8)	550 (21,7)	410 (16,1)	900 (35,4)	160 (6,30)	5700 (224,4)	2710 (106,7)	2300 (90,6)	12750 (28114)
2	300 (79,3)	22 (29,5)	275 (10,8)	550 (21,7)	410 (16,1)	900 (35,4)	200 (7,87)	5710 (224,8)	3065 (120,7)	2265 (89,2)	16500 (36383)
2	400 (105,7)	30 (40,2)	375 (14,8)	650 (25,6)	410 (16,1)	900 (35,4)	220 (8,66)	5800 (228,3)	3365 (132,5)	2520 (99,2)	20150 (44431)
2	200 (52,8)	11 (14,8)	275 (10,8)	550 (21,7)	410 (16,1)	900 (35,4)	90 (3,54)	6000 (236,2)	2660 (104,7)	2160 (85,0)	10200 (22491)
2	200 (52,8)	15 (20,1)	275 (10,8)	550 (21,7)	410 (16,1)	900 (35,4)	90 (3,54)	6080 (239,4)	2680 (105,5)	2200 (86,6)	11250 (24806)
2	300 (79,3)	18,5 (24,8)	275 (10,8)	550 (21,7)	410 (16,1)	900 (35,4)	160 (6,30)	6100 (240,2)	2770 (109,1)	2300 (90,6)	13600 (29988)
2	300 (79,3)	22 (29,5)	275 (10,8)	550 (21,7)	410 (16,1)	900 (35,4)	200 (7,87)	6150 (242,1)	3070 (120,9)	2400 (94,5)	17500 (38588)
2	400 (105,7)	30 (40,2)	375 (14,8)	650 (25,6)	410 (16,1)	900 (35,4)	220 (8,66)	6200 (244,1)	3400 (133,9)	2550 (100,4)	21800 (48069)
2	400 (105,7)	30 (40,2)	375 (14,8)	650 (25,6)	510 (20,1)	1000 (39,4)	240 (9,45)	6250 (246,1)	3500 (139,8)	2700 (106,3)	26100 (57551)
2	200 (52,8)	11 (14,8)	275 (10,8)	550 (21,7)	410 (16,1)	900 (35,4)	90 (3,54)	6170 (242,9)	2600 (102,4)	2160 (85,0)	10400 (22932)
2	200 (52,8)	15 (20,1)	275 (10,8)	550 (21,7)	410 (16,1)	900 (35,4)	90 (3,54)	6250 (246,1)	2680 (105,5)	2200 (86,6)	11500 (25358)
2	300 (79,3)	18,5 (24,8)	275 (10,8)	550 (21,7)	410 (16,1)	900 (35,4)	160 (6,30)	6270 (246,9)	3000 (118,1)	2250 (88,6)	14000 (30870)
2	300 (79,3)	22 (29,5)	275 (10,8)	550 (21,7)	410 (16,1)	900 (35,4)	200 (7,87)	6320 (248,8)	3070 (120,9)	2400 (94,5)	18000 (39690)
2	400 (105,7)	30 (40,2)	375 (14,8)	650 (25,6)	410 (16,1)	900 (35,4)	220 (8,66)	6400 (252,0)	3420 (134,6)	2550 (100,4)	22600 (49833)
2	400 (105,7)	30 (40,2)	375 (14,8)	650 (25,6)	510 (20,1)	1000 (39,4)	240 (9,45)	6450 (253,9)	3500 (137,8)	2710 (106,7)	26631 (58721)
4	300 (79,3)	18,5 (24,8)	275 (10,8)	550 (21,7)	410 (16,1)	1100 (43,3)	180 (7,09)	7750 (305,1)	3000 (118,1)	2260 (89,0)	24828 (54746)
4	400 (105,7)	30 (40,2)	375 (14,8)	650 (25,6)	410 (16,1)	1100 (43,3)	180 (7,09)	8150 (320,9)	3565 (140,4)	2600 (102,4)	30400 (67032)
4	400 (105,7)	30 (40,2)	375 (14,8)	650 (25,6)	510 (20,1)	1100 (43,3)	200 (7,87)	8150 (320,9)	3750 (147,6)	2700 (106,3)	36000 (79380)

POWER-BEND PRO

CNC PRESS
BRAKE



Perfect Combination of Speed and Power...

The Power-Bend Pro Series has been re-designed according to the current needs of our users and has reached to a unique structure with its electronic and mechanical equipment which gives excellent results in normal, stainless, thin and thick sheet metals. The Power-Bend Pro Series Press Brakes are among the most preferred models with the user-friendly CNC control panel and low maintenance requiring hydraulic systems which keep the production costs in your facility at minimum level and reach to high production speeds. Power-Bend Pro which brings design and technology together will be an economical and permanent solution of your business, in narrow, wide, complex and precise bendings, in mass production requiring single or high speed.

Realistic 3D modelling

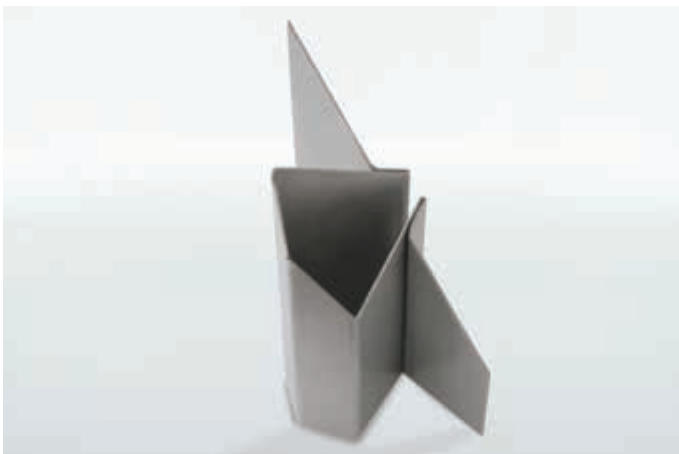
Low energy consumption

Easy service by remote access

Quick and easy tool replacement

Customer focused ergonomic solutions

Backgauge with servo motor



EASY SERVICE WITH REMOTE ACCESS

For the solution of defects that may occur in the machine, time loss is minimized by interfering with remote access over the internet (ERTOUCH).

USER FRIENDLY TOUCH SCREEN

The models can be seen on the screen with the 3D feature of the controller realistically. Thus, it provides the operator with ease of distinguishing the objects from each other and ease of implementation (ERTOUCH).



FAST AND EASY TOOL REPLACEMENT

Tools can be replaced without any need for an extra key for the standard used promecams on the machine.

RIGID UPPER BEAM WITH PRECISE POSITIONED BEARINGS

Thanks to the rigid upper beam operating on bearings at 12 points, with a bending accuracy of 0.01 mm, it is possible to obtain precision bendings.

FRONT SUPPORT ARMS

Sliding front support arms with stoppers moving with the help of linear rail and bearing.

EASY MAINTENANCE THANKS TO INDUSTRIAL DESIGN AND FLEXIBLE STRUCTURE

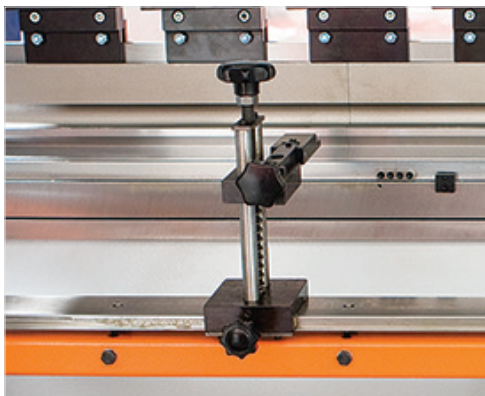
Maintenance and failure intervention times are minimized thanks to easy access to the accessories and the hydraulic systems requiring low maintenance.

POWER-BEND PRO

GENERAL SPECIFICATIONS



■ Power-Bend Pro standard backgauge system is offered as X-axis motorized, R-axis manual movement (S)



■ Specially designed folding backgauge fingers (S)



■ Promecam type top tool clamping system which can be manually installed and removed easily (S)

STANDARD EQUIPMENT

- Sliding front arms that is height-adjustable and with scale
- Handened and grinded top an bottom tools
- Promecam fast tool clamping system
- Control units; ER TOUCH EDUTION, DELEM DA-52S, CYBELEC CYBTOUCH 12, ESA S630
- 800 mm strong backgauge with CNC control single-axis
- 410 mm throat depth (60 - 320 tons)
- 2 axes backgauge finger
- Metric and inch scale
- Crowning system in the lower beam (manual crowning system in 3100/.../4100-260 and 3100/.../4100-320, motorized crowning system in machines over 3100-400 tons) is standard
- Movable foot pedal convenient for single and serial bending in compliance with the CE norm
- Front protection light curtain, side protection doors + switch and rear protection light curtain
- Top beam and cylinder covers are renewed with led light
- Different electrical voltage options according to the country where the machine will be operated



■ Body protection light curtain compliant with the CE standards ensuring safe operation (S)

OPTIONAL EQUIPMENT

- Special stroke and special throat depth options that provide advantage to the user in deep bendings
- Control units; ER TOUCH EDUTION, DELEM ER70, DELEM DA-58T, CYBELEC CYBTOUCH 15 PS, ESA S640, STEP ER77
- Optional backgauge stroke added backgauge fingers
- Motorized crowning systems
- Hydraulic oil cooling and heating system
- Segmented top and bottom tools
- Optional table width or bottom die V opening option
- Tools for box or pole bending
- Laser front protection options
- Electric panel, oil tank and controller case can be heated and cooled optionally
- Optional top and bottom tool holder
- Optional Promecam mechanical, pneumatic and hydraulic fast tool holder system
- Tool storage cabinet
- Automatic slide lubrication system that extends the lifetime of the sliding system
- U-Type dies for thick material bending
- Front support arms with additional movement to eliminate the stretching formed in thin materials
- Special machine production according to sheet length and thickness depending on demand
- AP3/AP4 motorized front sheet support system and parking place for reverse bending
- Control panel and/or electricity panel are mountable to the right side of the machine according to the demand of the customer
- Back sheet support system
- Sheet extraction system
- Pneumatic-finger backgauge system



■ DSP MCS AP finger protection system making time saving easy (O)



■ With robotic automation solutions, advantages in efficiency, quality, speed, performance, cost and safety provided.

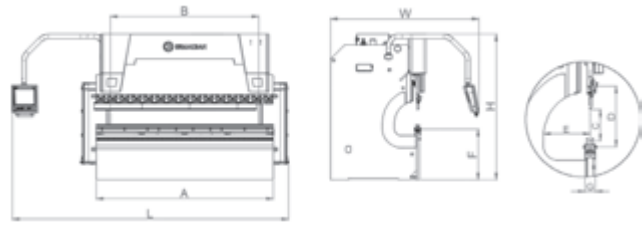


■ Up to 1500 mm special throat depth is offered for wide bendings (O)

TECHNICAL SPECIFICATIONS

TYPE	BENDING LENGTH	BENDING POWER	DISTANCE BETWEEN COLUMNS	Y RAPID SPEED	Y WORKING SPEED	Y RETURN SPEED	CROWNING	TRAVEL IN X AXIS	SPEED OF X AXIS	BACKGAUGE FINGER BLOCKS
	A		B							
	mm (inch)	Ton (tons)	mm (inch)	mm/s (inch/s)	mm/s (inch/s)	mm/s (inch/s)	standard	mm (inch)	mm/s (inch/s)	amount
PB PRO 1270-40 (4,17'-44)	1270 (50)	40 (44)	1050 (41,3)	140 (5,51)	10 (0,39)	170 (6,69)	-	800 (31,5)	230 (9,1)	2
PB PRO 1270-60 (4,17'-66)	1270 (50)	60 (66)	1000 (39,4)	160 (6,30)	10 (0,39)	165 (6,50)	-	800 (31,5)	230 (9,1)	2
PB PRO 2100-40 (6,89'-44)	2100 (83)	40 (44)	1700 (66,9)	140 (5,51)	10 (0,39)	170 (6,69)	-	800 (31,5)	230 (9,1)	2
PB PRO 2100-60 (6,89'-66)	2100 (83)	60 (66)	1700 (66,9)	160 (6,30)	10 (0,39)	165 (6,50)	-	800 (31,5)	230 (9,1)	2
PB PRO 2600-60 (8,53'-66)	2600 (102)	60 (66)	2200 (86,6)	200 (7,87)	10 (0,39)	165 (6,50)	-	800 (31,5)	230 (9,1)	2
PB PRO 2600-100 (8,53'-110)	2600 (102)	100 (110)	2200 (86,6)	200 (7,87)	9,5 (0,37)	155 (6,10)	-	800 (31,5)	230 (9,1)	2
PB PRO 2600-135 (8,53'-149)	2600 (102)	135 (149)	2200 (86,6)	160 (6,30)	10 (0,39)	120 (4,72)	-	800 (31,5)	230 (9,1)	2
PB PRO 3100-100 (10,17'-110)	3100 (122)	100 (110)	2600 (102,4)	200 (7,87)	9,5 (0,37)	155 (6,10)	-	800 (31,5)	230 (9,1)	2
PB PRO 3100-135 (10,17'-149)	3100 (122)	135 (149)	2600 (102,4)	200 (7,87)	10 (0,39)	120 (4,72)	-	800 (31,5)	230 (9,1)	2
PB PRO 3100-175 (10,17'-193)	3100 (122)	175 (193)	2600 (102,4)	180 (7,09)	10 (0,39)	135 (5,31)	-	800 (31,5)	230 (9,1)	2
PB PRO 3100-220 (10,17'-242)	3100 (122)	220 (242)	2600 (102,4)	180 (7,09)	10 (0,39)	160 (6,30)	-	800 (31,5)	230 (9,1)	2
PB PRO 3100-260 (10,17'-286)	3100 (122)	260 (286)	2600 (102,4)	140 (5,51)	10 (0,39)	135 (5,31)	Manuel	800 (31,5)	230 (9,1)	2
PB PRO 3100-320 (10,17'-352)	3100 (122)	320 (352)	2600 (102,4)	140 (5,51)	10 (0,39)	150 (5,91)	Manuel	800 (31,5)	230 (9,1)	2
PB PRO 3100-400 (10,17'-440)	3100 (122)	400 (440)	2550 (100,4)	110 (4,33)	8,4 (0,33)	130 (5,12)	Motorized	1000 (39,4)	230 (9,1)	2
PB PRO 3760-135 (12,34'-149)	3760 (148)	135 (149)	3250 (128,0)	200 (7,87)	10 (0,39)	120 (4,72)	-	800 (31,5)	230 (9,1)	2
PB PRO 3760-175 (12,34'-193)	3760 (148)	175 (193)	3250 (128,0)	180 (7,09)	10 (0,39)	135 (5,31)	-	800 (31,5)	230 (9,1)	2
PB PRO 3760-220 (12,34'-242)	3760 (148)	220 (242)	3250 (128,0)	180 (7,09)	10 (0,39)	160 (6,30)	-	800 (31,5)	230 (9,1)	2
PB PRO 3760-260 (12,34'-286)	3760 (148)	260 (286)	3250 (128,0)	140 (5,51)	10 (0,39)	135 (5,31)	Manuel	800 (31,5)	230 (9,1)	2
PB PRO 3760-320 (12,34'-352)	3760 (148)	320 (352)	3250 (128,0)	140 (5,51)	10 (0,39)	150 (5,91)	Manuel	800 (31,5)	230 (9,1)	2
PB PRO 4100-135 (13,45'-149)	4100 (161)	135 (149)	3600 (141,7)	200 (7,87)	10 (0,39)	120 (4,72)	-	800 (31,5)	230 (9,1)	2
PB PRO 4100-175 (13,45'-193)	4100 (161)	175 (193)	3600 (141,7)	180 (7,09)	10 (0,39)	135 (5,31)	-	800 (31,5)	230 (9,1)	2
PB PRO 4100-220 (13,45'-242)	4100 (161)	220 (242)	3600 (141,7)	180 (7,09)	10 (0,39)	160 (6,30)	-	800 (31,5)	230 (9,1)	2
PB PRO 4100-260 (13,45'-286)	4100 (161)	260 (286)	3600 (141,7)	140 (5,51)	10 (0,39)	135 (5,31)	Manuel	800 (31,5)	230 (9,1)	2
PB PRO 4100-320 (13,45'-352)	4100 (161)	320 (352)	3600 (141,7)	140 (5,51)	10 (0,39)	150 (5,91)	Manuel	800 (31,5)	230 (9,1)	2
PB PRO 4100-400 (13,45'-440)	4100 (161)	400 (440)	3550 (139,8)	110 (4,33)	8,4 (0,33)	130 (5,12)	Motorized	1000 (39,4)	230 (9,1)	2
PB PRO 4270-135 (14,01'-149)	4270 (168)	135 (149)	3780 (148,8)	200 (7,87)	10 (0,39)	120 (4,72)	-	800 (31,5)	230 (9,1)	2
PB PRO 4270-175 (14,01'-193)	4270 (168)	175 (193)	3780 (148,8)	180 (7,09)	10 (0,39)	135 (5,31)	-	800 (31,5)	230 (9,1)	2
PB PRO 4270-220 (14,01'-242)	4270 (168)	220 (242)	3780 (148,8)	180 (7,09)	10 (0,39)	160 (6,30)	-	800 (31,5)	230 (9,1)	2
PB PRO 4270-260 (14,01'-286)	4270 (168)	260 (286)	3780 (148,8)	140 (5,51)	10 (0,39)	135 (5,31)	Manuel	800 (31,5)	230 (9,1)	2
PB PRO 4270-320 (14,01'-352)	4270 (168)	320 (352)	3780 (148,8)	140 (5,51)	10 (0,39)	150 (5,91)	Manuel	800 (31,5)	230 (9,1)	2
PB PRO 4270-400 (14,01'-440)	4270 (168)	400 (440)	3780 (148,8)	110 (4,33)	8,4 (0,33)	130 (5,12)	Motorized	1000 (39,4)	230 (9,1)	2
PB PRO 6100-220 (20,01'-242)	6100 (240)	220 (242)	5100 (200,8)	130 (5,12)	10 (0,39)	125 (4,92)	-	800 (31,5)	230 (9,1)	4
PB PRO 6100-320 (20,01'-352)	6100 (240)	320 (352)	5100 (200,8)	80 (3,15)	10 (0,39)	75 (2,95)	Motorized	800 (31,5)	230 (9,1)	4
PB PRO 6100-400 (20,01'-440)	6100 (240)	400 (440)	5100 (200,8)	80 (3,15)	8,4 (0,33)	65 (2,56)	Motorized	1000 (39,4)	230 (9,1)	4

* Bending speed can not exceed 10mm/sec (0,39inc/sec) according to the CE regulations.



NUMBER OF SHEET SUPPORT	OIL CAPACITY	MOTOR POWER	STROKE	DAYLIGHT	THROAT DEPTH	TABLE HEIGHT	TABLE WIDTH	LENGTH	HEIGHT	WIDTH	WEIGHT
amount	lt. (us gallons)	kW (hp)	mm (inch)	mm (inch)	mm (inch)	mm (inch)	mm (inch)	mm (inch)	mm (inch)	mm (inch)	kg. (lbr.)
2	80 (21.1)	5,5 (7.4)	170 (6.7)	387 (15.2)	350 (13.8)	850 (33.5)	90 (3.54)	2750 (108.3)	2155 (84.8)	2010 (79.1)	3030 (6681)
2	150 (39.6)	7,5 (10.1)	275 (10.8)	530 (20.9)	410 (16.1)	900 (35.4)	90 (3.54)	3175 (125.0)	2580 (101.6)	2100 (82.7)	4130 (9107)
2	80 (21.1)	5,5 (7.4)	170 (6.7)	387 (15.2)	350 (13.8)	850 (33.5)	90 (3.54)	3600 (141.7)	2200 (86.6)	2100 (82.7)	3685 (8125)
2	150 (39.6)	7,5 (10.1)	275 (10.8)	530 (20.9)	410 (16.1)	900 (35.4)	90 (3.54)	4015 (158.1)	2580 (101.6)	1870 (73.6)	4885 (10771)
2	150 (39.6)	7,5 (10.1)	275 (10.8)	530 (20.9)	410 (16.1)	900 (35.4)	90 (3.54)	4450 (175.2)	2580 (101.6)	1800 (70.9)	5410 (11929)
2	150 (39.6)	7,5 (10.1)	275 (10.8)	530 (20.9)	410 (16.1)	900 (35.4)	90 (3.54)	4350 (171.3)	2550 (100.4)	2500 (98.4)	5983 (13193)
2	200 (52.8)	11 (14.8)	275 (10.8)	550 (21.7)	410 (16.1)	900 (35.4)	90 (3.54)	4425 (174.2)	2800 (110.2)	2100 (82.7)	7383 (16280)
2	150 (39.6)	7,5 (10.1)	275 (10.8)	530 (20.9)	410 (16.1)	900 (35.4)	90 (3.54)	4970 (195.7)	2550 (100.4)	2480 (97.6)	6506 (14346)
2	200 (52.8)	11 (14.8)	275 (10.8)	550 (21.7)	410 (16.1)	900 (35.4)	90 (3.54)	4900 (192.9)	2650 (104.3)	2150 (84.6)	7906 (17433)
2	200 (52.8)	15 (20.1)	275 (10.8)	550 (21.7)	410 (16.1)	900 (35.4)	90 (3.54)	5025 (197.8)	2680 (105.5)	2150 (84.6)	8806 (19417)
2	300 (79.3)	18,5 (24.8)	275 (10.8)	550 (21.7)	410 (16.1)	900 (35.4)	200 (7.87)	5050 (198.8)	2700 (106.3)	2250 (88.6)	11006 (24268)
2	300 (79.3)	22 (29.5)	275 (10.8)	550 (21.7)	410 (16.1)	900 (35.4)	220 (8.66)	4550 (179.1)	2900 (114.2)	2350 (92.5)	13606 (30001)
2	400 (105.7)	30 (40.2)	375 (14.8)	650 (25.6)	410 (16.1)	900 (35.4)	240 (9.45)	4550 (179.1)	3200 (126.0)	2450 (96.5)	16560 (36515)
2	400 (105.7)	30 (40.2)	375 (14.8)	650 (25.6)	510 (20.1)	1000 (39.4)	240 (9.45)	4550 (179.1)	3470 (136.6)	2650 (104.3)	20430 (45048)
2	200 (52.8)	11 (14.8)	275 (10.8)	550 (21.7)	410 (16.1)	900 (35.4)	90 (3.54)	5560 (218.9)	2650 (104.3)	2150 (84.6)	9110 (20088)
2	200 (52.8)	15 (20.1)	275 (10.8)	550 (21.7)	410 (16.1)	900 (35.4)	90 (3.54)	5560 (218.9)	2930 (115.4)	2150 (84.6)	10010 (22072)
2	300 (79.3)	18,5 (24.8)	275 (10.8)	550 (21.7)	410 (16.1)	900 (35.4)	160 (6.30)	5700 (224.4)	2710 (106.7)	2300 (90.6)	12460 (27474)
2	300 (79.3)	22 (29.5)	275 (10.8)	550 (21.7)	410 (16.1)	900 (35.4)	200 (7.87)	5710 (224.8)	3065 (120.7)	2265 (89.2)	16210 (35743)
2	400 (105.7)	30 (40.2)	375 (14.8)	650 (25.6)	410 (16.1)	900 (35.4)	220 (8.66)	5800 (228.3)	3365 (132.5)	2520 (99.2)	19680 (43791)
2	200 (52.8)	11 (14.8)	275 (10.8)	550 (21.7)	410 (16.1)	900 (35.4)	90 (3.54)	6000 (236.2)	2660 (104.7)	2160 (85.0)	9900 (21830)
2	200 (52.8)	15 (20.1)	275 (10.8)	550 (21.7)	410 (16.1)	900 (35.4)	90 (3.54)	6080 (239.4)	2680 (105.5)	2200 (86.6)	10950 (24145)
2	300 (79.3)	18,5 (24.8)	275 (10.8)	550 (21.7)	410 (16.1)	900 (35.4)	160 (6.30)	6100 (240.2)	2770 (109.1)	2300 (90.6)	13300 (29327)
2	300 (79.3)	22 (29.5)	275 (10.8)	550 (21.7)	410 (16.1)	900 (35.4)	200 (7.87)	6150 (242.1)	3070 (120.9)	2400 (94.5)	17200 (37926)
2	400 (105.7)	30 (40.2)	375 (14.8)	650 (25.6)	410 (16.1)	900 (35.4)	220 (8.66)	6200 (244.1)	3400 (133.9)	2550 (100.4)	21500 (47408)
2	400 (105.7)	30 (40.2)	375 (14.8)	650 (25.6)	510 (20.1)	1000 (39.4)	240 (9.45)	6250 (246.1)	3500 (139.8)	2700 (106.3)	25800 (56889)
2	200 (52.8)	11 (14.8)	275 (10.8)	550 (21.7)	410 (16.1)	900 (35.4)	90 (3.54)	6170 (262.9)	2600 (102.4)	2160 (85.0)	10100 (22271)
2	200 (52.8)	15 (20.1)	275 (10.8)	550 (21.7)	410 (16.1)	900 (35.4)	90 (3.54)	6250 (246.1)	2680 (105.5)	2200 (86.6)	11200 (24696)
2	300 (79.3)	18,5 (24.8)	275 (10.8)	550 (21.7)	410 (16.1)	900 (35.4)	160 (6.30)	6270 (246.9)	3000 (118.1)	2250 (88.6)	13700 (30209)
2	300 (79.3)	22 (29.5)	275 (10.8)	550 (21.7)	410 (16.1)	900 (35.4)	200 (7.87)	6320 (248.8)	3070 (120.9)	2400 (94.5)	17700 (39029)
2	400 (105.7)	30 (40.2)	375 (14.8)	650 (25.6)	410 (16.1)	900 (35.4)	220 (8.66)	6400 (252.0)	3420 (134.6)	2550 (100.4)	22300 (49172)
2	400 (105.7)	30 (40.2)	375 (14.8)	650 (25.6)	510 (20.1)	1000 (39.4)	240 (9.45)	6450 (253.9)	3500 (137.8)	2710 (106.7)	26331 (58060)
4	300 (79.3)	18,5 (24.8)	275 (10.8)	550 (21.7)	410 (16.1)	1100 (43.3)	180 (7.09)	7750 (305.1)	3000 (118.1)	2260 (89.0)	24748 (54569)
4	400 (105.7)	30 (40.2)	375 (14.8)	650 (25.6)	410 (16.1)	1100 (43.3)	180 (7.09)	8150 (320.9)	3565 (140.4)	2600 (102.4)	30320 (66856)
4	400 (105.7)	30 (40.2)	375 (14.8)	650 (25.6)	510 (20.1)	1100 (43.3)	200 (7.87)	8150 (320.9)	3750 (147.6)	2700 (106.3)	35920 (79204)

ECO-BEND EXPERT

CNC HYDRAULIC
PRESS BRAKES



ERMAKSA
INNOVATIVE TECHNOLOGY

Economic Solution...

CNC Hydraulic Press Brake Eco-Bend brings profit to your investment with the power it has given to your business in economic sense and it is user-friendly with the hardware features it offers both as a standard and option. Eco-Bend offers as a standard the CNC control unit with 2-dimensional graphic display high programming ability to its user. CNC Hydraulic Press Brake Eco-Bend will add power to your business with low investment cost, high efficiency and economical solutions it provides.

With its low operation cost, it contributes to your budget and thanks to its mono bloc body and strong rigid structure, it gives long life usage possibility.

Low investment cost

Economic machine

Strong rigid structure

Easy tool replacement



ECONOMIC CLASS

It offers a more cost-effective option by reducing total investment cost without compromising the performance.

FAST AND EASY TOOL REPLACEMENT

The tool can be replaced without any need for an extra key for the standard used promecams on the machine.



LOW OPERATION COST

It is used in high-efficiency energy saving motors. Low & easy maintenance required Cylinders and hydraulic components are used. This provides cost saving in operation.

21,5" 2D TOUCH SCREEN

- Touchscreen
- Driving up to a maximum of 5 axes
- 2D bending simulation
- Offline software

SHORT-TERM RETURN ON INVESTMENT

Due to the low priced investment, it will return is cost shortly.

MONOBLOCK BODY

Thanks to its one-piece welded body, it can be used safely for many years.

POWER-BEND ST

ERGONOMIC
CNC PRESS BRAKE



Ergonomic design

Comfortable and practical work

Enjoy Bending while Sitting!

It is an excellent solution that offers cost and operation area advantages for our customers who work with small and thin parts down to 1.27 meters. It provides a comfortable working environment for the operator thanks to its ergonomic design with a seater, knee gap, work desk and height adjustable CNC pendant arm.

ERGONOMIC DESIGN (CONTROLLER)

Thanks to the controller that is height adjustable, the controller that is inserted to the movable control panel, operator's access to control the machine is very easy.

COMFORT OF USE (SEAT)

With the knee gap opening to the bottom beam, wide work table and comfortable seat, working with maximum comfort is ensured for the operator.

REMOTE ACCESS / EASY ERROR DETECTION

The time loss is minimized thanks to the possibility of intervention to the failures in the machine by accessing via internet (ERTOUCHE).

MICRO-BEND

CNC HYDRAULIC
PRESS BRAKES



Bending force	40 Tons (44 Us Tons)
Bending length	1000 mm (3,2 ft)
3 axes	Y1, Y2, X, Standard

▶ Easy installation

Don't You Have Much Space as Usage Area?

Then, we recommend you the most efficient and smallest of its class, the Hydraulic Press Brake Micro-Bend. Micro-Bend which stands out with its low investment cost, ergonomic design and high efficiency has single axis backgauge, the capacity to bend the 5 mm mild steel in full length with 1m x 40 ton press power.

SERIAL PRODUCTION WITH LOW STROKE

With low stroke, non-bending times are at minimized level. That is why it has high efficiency.

SIMPLE OPERATION

Small, simple bendings provide to bend with maximum efficiency.

COMPACT MACHINE

Although it is small, it is a very useful machine with maximum efficiency and general features.

HEAVY DUTY

SYNCHRONIZED HYDRAULIC PRESS BRAKES

Right Choice for Heavy Duty Bending Projects

With Ermaksan reliability, superior product quality and advanced production techniques, it offers flexible and ideal solutions for everchanging global market expectations, developing technology and customized customer requests.



■ Speed- Bend

■ 16200 x 2500 Tons
(5,3 ft x 2755 Us Tons)

■ (2 x 8.100 mm x 1.250 Tons)
(2 x 26,57 ft x 1.377 Us Tons)



■ It is used in the production of lighting poles.

■ Saudi Arabia

HEAVY DUTY

SYNCHRONIZED HYDRAULIC
PRESS BRAKES



■ Speed- Bend

■ 12300mm x 1500 Tons
(40,35 ft x 1653 Us Tons)

■ (3 x 4.100 mm x 500 Tons)
(3 x 13,45 ft x 551 Us Tons)



Tandem Press Brakes offer flexible solutions to all the needs of the industry, while eliminating your loss of work and time.

Tandem press brakes have been designed to meet all of your needs with its flexible structure that allows performing your bending in full length as well as bending your short-length materials by using them separately.

The heavy tonnage press brakes which provide high-performance, with their feature of being long-life enable you to use in the most efficient way in difficult bendings.



■ It is used in the conical pole bending.

■ Russia

HEAVY DUTY

SYNCHRONIZED HYDRAULIC PRESS BRAKES

The heavy tonnage press brakes designed and produced under the brand name of Ermaksan are produced according to the demands of the customers in different lengths and tonnages.

Heavy Tonnage Press Brakes allow you to work with full capacity prevent time loss in your works.

Ermaksan special press brakes are used all over the world in a wide range from heavy machinery industry, transportation, ship construction, wind turbines, power plants, aviation and defence industry, the production of lighting poles, etc.



■ Power-Bend

■ 14200mm x 2000 Tons
(46,58 ft x 2204 Us Tons)



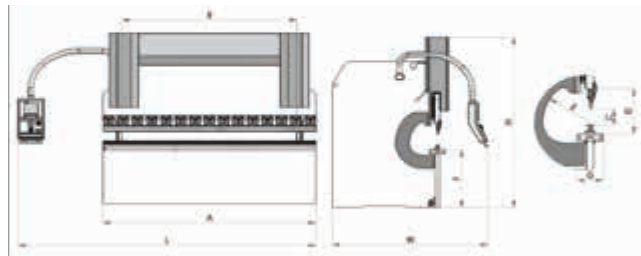
■ It is used in the manufacture of motorway guardrails and wind turbine poles.

■ Netherlands

TECHNICAL SPECIFICATIONS

TYPE	BENDING LENGTH	BENDING POWER	DISTANCE BETWEEN COLUMNS	Y RAPID SPEED	Y WORKING SPEED	Y RETURN SPEED	CROWNING	TRAVEL IN X AXIS	SPEED OF X AXIS	BACKGAUGE FINGER BLOCKS
	A		B							
	mm (inch)	Ton (tons)	mm (inch)	mm/s (inch/s)	mm/s (inch/s)	mm/s (inch/s)	standard	mm (inch)	mm/s (inch/s)	amount
ECO BEND EXPERT 2600-80 (8,53'-88)	2600 (102,4)	80 (88)	2200 (88,6)	90 (3,54)	7,5 (0,30)	60 (2,36)	-	800 (31,5)	230 (9,1)	2
ECO BEND EXPERT 2600-120 (8,53'-132)	2600 (102,4)	120 (132)	2200 (88,6)	90 (3,54)	7,5 (0,30)	65 (2,56)	-	800 (31,5)	230 (9,1)	2
ECO BEND EXPERT 3100-80 (10,17'-88)	3100 (122,0)	80 (88)	2600 (102,4)	90 (3,54)	7,5 (0,30)	60 (2,36)	-	800 (31,5)	230 (9,1)	2
ECO BEND EXPERT 3100-120 (10,17'-132)	3100 (122,0)	120 (132)	2600 (102,4)	90 (3,54)	7,5 (0,30)	65 (2,56)	-	800 (31,5)	230 (9,1)	2
ECO BEND EXPERT 3100-160 (10,17'-176)	3100 (122,0)	160 (176)	2600 (102,4)	90 (3,54)	7,5 (0,30)	80 (3,15)	-	800 (31,5)	230 (9,1)	2
ECO BEND EXPERT 3100-200 (10,17'-220)	3100 (122,0)	200 (220)	2600 (102,4)	100 (3,94)	7 (0,28)	75 (2,95)	-	800 (31,5)	230 (9,1)	2
ECO BEND EXPERT 3600-120 (11,81'-132)	3600 (141,7)	120 (132)	3100 (122,0)	90 (3,54)	7,5 (0,30)	65 (2,56)	-	800 (31,5)	230 (9,1)	2
ECO BEND EXPERT 3600-160 (11,81'-176)	3600 (141,7)	160 (176)	3100 (122,0)	90 (3,54)	7,5 (0,30)	80 (3,15)	-	800 (31,5)	230 (9,1)	2
ECO BEND EXPERT 3600-200 (11,81'-220)	3600 (141,7)	200 (220)	3100 (122,0)	100 (3,94)	7 (0,28)	75 (2,95)	-	800 (31,5)	230 (9,1)	2
ECO BEND EXPERT 3760-120 (12,33'-132)	3760 (148,0)	120 (132)	3250 (128,0)	90 (3,54)	7,5 (0,30)	65 (2,56)	-	800 (31,5)	230 (9,1)	2
ECO BEND EXPERT 3760-160 (12,33'-176)	3760 (148,0)	160 (176)	3250 (128,0)	90 (3,54)	7,5 (0,30)	80 (3,15)	-	800 (31,5)	230 (9,1)	2
ECO BEND EXPERT 3760-200 (12,33'-220)	3760 (148,0)	200 (220)	3250 (128,0)	100 (3,94)	7 (0,28)	75 (2,95)	-	800 (31,5)	230 (9,1)	2
ECO BEND EXPERT 4100-120 (13,45'-132)	4100 (161,4)	120 (132)	3600 (141,7)	90 (3,54)	7,5 (0,30)	65 (2,56)	-	800 (31,5)	230 (9,1)	2
ECO BEND EXPERT 4100-160 (13,45'-176)	4100 (161,4)	160 (176)	3600 (141,7)	90 (3,54)	7,5 (0,30)	80 (3,15)	-	800 (31,5)	230 (9,1)	2
ECO BEND EXPERT 4100-200 (13,45'-220)	4100 (161,4)	200 (220)	3600 (141,7)	100 (3,94)	7 (0,28)	75 (2,95)	-	800 (31,5)	230 (9,1)	2
ECO BEND EXPERT 4270-120 (14'-132)	4270 (168,1)	120 (132)	3780 (148,8)	90 (3,54)	7,5 (0,30)	65 (2,56)	-	800 (31,5)	230 (9,1)	2
ECO BEND EXPERT 4270-160 (14'-176)	4270 (168,1)	160 (176)	3780 (148,8)	90 (3,54)	7,5 (0,30)	80 (3,15)	-	800 (31,5)	230 (9,1)	2
ECO BEND EXPERT 4270-200 (14'-220)	4270 (168,1)	200 (220)	3780 (148,8)	100 (3,94)	7 (0,28)	75 (2,95)	-	800 (31,5)	230 (9,1)	2

* Bending speed can not exceed 10mm/sec (0,39inc/sec) according to the CE regulations.



NUMBER OF SHEET SUPPORT	OIL CAPACITY	MOTOR POWER	STROKE	DAYLIGHT	THROAT DEPTH	TABLE HEIGHT	TABLE WIDTH	LENGTH	HEIGHT	WIDTH	WEIGHT
			C	D	E	F	G	L	H	W	
amount	lt. (us gallons)	kW (hp)	mm (inch)	mm (inch)	mm (inch)	mm (inch)	mm (inch)	mm (inch)	mm (inch)	mm (inch)	kg. (lbr.)
2	150 (39,6)	5,5 (7,4)	160 (6,3)	380 (15,0)	250 (9,8)	900 (35,4)	90 (3,5)	3750 (147,6)	2400 (94,5)	1950 (76,8)	5227 (11526)
2	150 (39,6)	7,5 (10,1)	160 (6,3)	385 (15,2)	250 (9,8)	900 (35,4)	90 (3,5)	3750 (147,6)	2500 (98,4)	1900 (74,8)	6400 (14112)
2	150 (39,6)	5,5 (7,4)	160 (6,3)	380 (15,0)	250 (9,8)	900 (35,4)	90 (3,5)	4360 (171,7)	2400 (94,5)	1950 (76,8)	5792 (12771)
2	150 (39,6)	7,5 (10,1)	160 (6,3)	385 (15,2)	250 (9,8)	900 (35,4)	90 (3,5)	4250 (167,3)	2500 (98,4)	1900 (74,8)	6913 (15243)
2	200 (52,8)	11 (14,8)	160 (6,3)	395 (15,6)	250 (9,8)	900 (35,4)	90 (3,54)	4250 (167,3)	2550 (100,4)	1900 (74,8)	7524 (16590)
2	200 (52,8)	11 (14,8)	180 (7,1)	415 (16,3)	250 (9,8)	900 (35,4)	200 (7,9)	4450 (175,2)	2650 (104,3)	2050 (80,7)	9311 (20531)
2	150 (39,6)	7,5 (10,1)	160 (6,3)	485 (19,1)	250 (9,8)	900 (35,4)	90 (3,54)	4750 (187,0)	2500 (98,4)	1900 (74,8)	7625 (16813)
2	200 (52,8)	11 (14,8)	160 (6,3)	495 (19,5)	250 (9,8)	900 (35,4)	90 (3,54)	4750 (187,0)	2550 (100,4)	1900 (74,8)	8293 (18286)
2	200 (52,8)	11 (14,8)	180 (7,1)	415 (16,3)	250 (9,8)	900 (35,4)	160 (6,3)	4950 (194,9)	2650 (104,3)	2050 (80,7)	10126 (22328)
2	150 (39,6)	7,5 (10,1)	160 (6,3)	385 (15,2)	250 (9,8)	900 (35,4)	90 (3,54)	4910 (193,3)	2500 (98,4)	1900 (74,8)	7850 (17309)
2	200 (52,8)	11 (14,8)	160 (6,3)	395 (15,6)	250 (9,8)	900 (35,4)	90 (3,54)	4910 (193,3)	2550 (100,4)	1900 (74,8)	8514 (18773)
2	200 (52,8)	11 (14,8)	180 (7,1)	415 (16,3)	250 (9,8)	900 (35,4)	160 (6,3)	5110 (201,2)	2650 (104,3)	2050 (80,7)	10444 (23029)
2	150 (39,6)	7,5 (10,1)	160 (6,3)	385 (15,2)	250 (9,8)	900 (35,4)	90 (3,54)	5050 (198,8)	2500 (98,4)	1900 (74,8)	8644 (19060)
2	200 (52,8)	11 (14,8)	160 (6,3)	395 (15,6)	250 (9,8)	900 (35,4)	90 (3,54)	5050 (198,8)	2550 (100,4)	1900 (74,8)	9214 (20317)
2	200 (52,8)	11 (14,8)	180 (7,1)	415 (16,3)	250 (9,8)	900 (35,4)	160 (6,3)	5150 (202,8)	2650 (104,3)	2050 (80,7)	11297 (24910)
2	150 (39,6)	7,5 (10,1)	160 (6,3)	385 (15,2)	250 (9,8)	900 (35,4)	90 (3,54)	5220 (205,5)	2500 (98,4)	1900 (74,8)	8800 (19404)
2	200 (52,8)	11 (14,8)	160 (6,3)	395 (15,6)	250 (9,8)	900 (35,4)	90 (3,54)	5220 (205,5)	2550 (100,4)	1900 (74,8)	9400 (20727)
2	200 (52,8)	11 (14,8)	180 (7,1)	415 (16,3)	250 (9,8)	900 (35,4)	160 (6,3)	5320 (209,4)	2650 (104,3)	2050 (80,7)	11500 (25358)

ER TOUCH EDITION

ERMAKSAN

Speed-Bend Pro (Standart)
Power-Bend Pro (Standart)

Speed-Bend Falcon (Standart)
Eco-Bend Expert (standart)

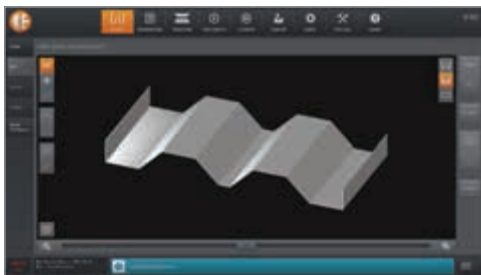


ERMAKSAN is setting new limits in the sheet metal processing machine controllers field by combining its know-how with cutting-edge technology, backed by highly skilled manpower and half a century of experience in the sheet metal processing machinery industry.

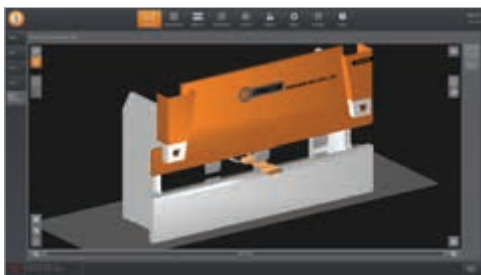
GENERAL SPECIFICATIONS



■ 2D part drawing can be made on the control screen



■ Can convert the drawn part to 3D view



■ It can show the 3D image of the part on the machine at the same time, it can also calculate the bending sequence

- 21.5" Multi touch screen (1920x1080 pixels)
- Driving up to 12 axes
- Multiple language support
- Authorizing added users
- Ability to import and export tools in DXF and DWG files
- Ability to create a numeric bending
- 2D touch product drawing
- 3D machine drawing and simulation
- 3D real-time bending tracking monitoring
- Ability to add unlimited products, materials and tools
- Bottoming bending, Air Bending and Circular Bending capability
- Finding the fastest bending sequence that prevent collision
- Ability to filter multiple properties at the same time
- Reverse mounting of tools
- Collision Detection during product drawing
- Automatic update over the internet
- Quick E-help guide
- Backup Restore System (USB - Hard Disk - Network)
- Ability to create a work list PDF report
- Offline software

OPTIONS

- Supports Third Party software (Metalix, Autopol, Radan)
- CNC controlled automatic bending sheet support
- LaserSafe Security System support
- Robot integration support
- Supports tool position indication with LED bar
- Mitotoyo angle gauge support
- KEBA KeMes angle measurement system support
- Barcode reader support
- RFID support
- Data analysis support with EON 4.0

ER TOUCH INDUSTRY 4.0

ER 4.0 SOFTWARE
SOLUTIONS



We began our mission to become the pioneer of the era of intelligent production with our strong R & D infrastructure and innovative approach. Today, we are leading the intelligent production processes of Industry 4.0, which is a new manufacturing concept by integrating the intelligent production systems and optimizing the manufacturing processes with minimum cost and maximum efficiency.

ER TOUCH INDUSTRY 4.0

ER 4.0 SOFTWARE
SOLUTIONS



Transform

Transform your machines into "connected" and "smart" systems for the Industry 4.0



Read the Machine Data

Read the telemetry data of your machines in a standard and efficient way.



Remote Support

Connect to your machines remotely. Provide fast and effective support services.



Collect and Report your Data

Collect centrally, categorize and report your machine data.



Visualize and Analyze

Visualize and analyze your data with easy and understandable graphics.



Integrate

Integrate your machines with the MES and ERP systems through secure API connections.



Link

Link the machine data with physical events such as maintenance, repair and replacement. Record what is done in which situation.



Inform the Support Teams

Warn your teams with alarms and messages. Share the error details for solution.



Estimate

Estimate the failures in advance using the data you have collected.



Software Solutions for Smart Factories

With its innovative approach and experience of more than a half-century, Ermaksan facilitates the industrial life with its engineering works towards Industry 4.0, as well as its software, works to develop and perfect the smart production processes. The ER 4.0 software, which processes and reports the data transferred via the inter-machine communication network has been designed to ensure continuity and productivity in production.

Thanks to ER 4.0 software developed by Ermaksan engineers under the scope of Industry 4.0, all the components on the machine are collected on a common network and the data can be easily accessed.

Thanks to this software, we increase the performance and productivity of our machines all over the world by reaching a wide range of data from the location of the machine to its working conditions, productivity, error, warning and fault conditions and contribute to our customers' production targets.

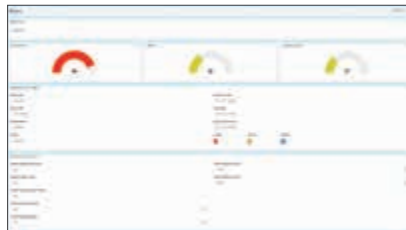
Authorized user login page



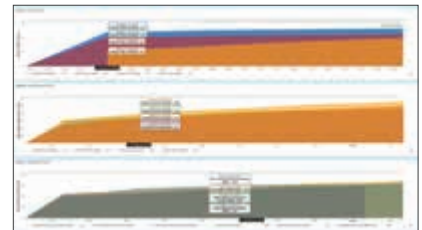
Machine productivity control screen



■ **ACTIVE MACHINE CONTROL SCREEN**
It allows to monitor all machines operating in the field on a single screen for the error, warning, efficiency data.



■ **MACHINE EFFICIENCY CONTROL SCREEN**
It provides a graphical view of the ratios of performance, quality, usability data on the machines.



■ **SENSOR VOLUME MONITORING SCREEN**
It allows you to see the instantaneous temperature change of the equipment such as the motor, driver, etc. in the machine.



■ **MONITORING ON MAP**
It allows you to control the status of your machines in different locations on a single screen.



■ **PREVENTIVE MAINTENANCE**
It allows detecting the faults that may occur in your machines before they occur.



■ **PRODUCTION AND ENERGY CONSUMPTION SCREEN**
During production, the machine's energy consumption allows the number of parts produced and hydraulic oil temperature changes to be monitored.

DA-69T

DELEM

Speed-Bend Pro (Optional)



GENERAL SPECIFICATIONS

- 3D and 2D graphics touch screen programming mode
- 3D and 2D imaging in simulation and production
- 17" high resolution colour TFT screen
- Full-featured Windows application
- Profile-T3D offline software
- 1 GB memory
- Product and tool memory 256 MB
- USB flash memory drive
- Emergency stop button
- 2D and 3D automatic bending sequence calculation
- Graphical product and tool selection
- Programmable material properties
- Programmable axis speeds
- Free material programming
- Product and tool search filters
- Millimeters / Inch, kN / Ton selection
- Stroke counter
- Graphic tool configuration

DA-66T

DELEM

Speed-Bend Pro (Standard)
Power-Bend Pro (Optional)

Power-Bend Falcon (Optional)
Eco-Bend Expert (Optional)



GENERAL SPECIFICATIONS

- 2D graphics touch screen programming mode
- 3D imaging in simulation and production
- 17" high resolution colour TFT screen
- Full-featured Windows application
- Standard Profile-LITE offline software
- 1 GB memory
- Product and tool memory 256 MB
- USB flash memory drive
- Emergency stop button
- Alphanumeric product naming
- Real scale product programming and imaging
- Automatic bending sequence calculation
- Programmable material properties
- Millimeters / Inch, kN / Ton Selection
- Stroke counter

DA-58T

DELEM

Power-Bend Falcon (Standard)

Power-Bend Pro (Optional)

Eco-Bend Expert (Optional)



GENERAL SPECIFICATIONS

- Maximum 4 axes
- 2D graphics touch screen programming mode
- 15" high resolution colour TFT screen
- Bending sequence calculation
- Crowning control
- 1 GB memory
- USB flash memory drive
- Alphanumeric product naming

- Real scale product programming and imaging
- Automatic bending sequence calculation
- Programmable material properties
- Millimeters / Inch, kN / Ton selection
- Stroke counter

ER70

DELEM

Power-Bend Pro (Optional)

Eco-Bend Expert (Optional)



GENERAL SPECIFICATIONS

- Maximum 4 axes
- 2D graphics programming mode and display
- 10.4" LCD TFT screen
- Bending sequence calculation
- Expansion dimension calculation
- Crowning control
- USB flash memory drive
- 256 MB memory
- 30 top tools, 60 bottom tools memory

- Alphanumeric product naming
- Millimeters / Inch selection
- Programmable axis speed per step
- Programmable material properties
- Stroke counter (up to 9999)
- Step repeat (up to 99)

VISITOUCH 19 MX

CYBELEC

Speed-Bend Pro (Optional)

This 3D graphical numerical control with its powerful touchscreen interface let the operator exploit the full range of features with his fingertips. Importing, programming, visualizing and simulating the bending of a part become quick, easy and efficient.

EASE TO USE AND POWERFUL

- 19" user friendly HMI with a very intuitive programming
- Full 3D visualisation and simulation
- Import parts in DXF, IGES, STEP and SAT format
- Automatic solutions of complex parts: automatic tooling, auto segmentation, automatic gauging, automatic bend sequence
- Customizable User buttons for the machine operator
- Running under Windows 7 for multitasking and networking
- Angle measurement with various angle protractors
- Integrated control of angle measurement, robot control and data management for Industry 4.0



VISITOUCH 19T

CYBELEC

Speed-Bend Pro (Standard)
Power-Bend Pro (Optional)

Power-Bend Falcon (Optional)
Eco-Bend Expert (Optional)

This 2D graphical numerical control with its powerful touchscreen interface let the operator exploit the full range of features with his fingertips. Programming numerical or with the 2D graphical profile, visualizing and simulating the bending of a part become quick, easy and efficient.

EASE TO USE AND POWERFUL

- 19" user friendly HMI with a very intuitive programming
- 2D graphic programming with automatic bend sequence calculation
- 3D visualisation and simulation of imported program
- Customizable User buttons for the machine operator
- Running under Windows 7 for multitasking and networking
- Angle measurement with various angle protractors
- Integrated control of angle measurement, robot control and data management for Industry 4.0



CYBTOUCH 15 PS

CYBELEC

Power-Bend Falcon (Standard)

Power-Bend Pro (Optional)

Eco-Bend Expert (Optional)



This 2D graphical numerical control with its large touchscreen interface offers a high integration of functionalities.

EASE TO USE AND POWERFUL

- 15" touchscreen with intuitive and user-friendly interface
- Up to 6 axis and crowning control
- 2D graphic programming with automatic bend sequence calculation
- Interactive messages constantly guide the operator
- Easy single bends thanks to the EasyBend page
- Internal backup and restore functions
- USB port for memory sticks for datatransfer/backup
- Telemaintenance via wireless connection with PC or notebook

CYBTOUCH 12 PS

CYBELEC

Power-Bend Pro (Standard)

Eco-Bend Expert (Standard)



Wide-button interactive touch software interface, 2D graphical display, online support and many more automatic functions guide the operator constantly.

EASE OF USE

- Large, vivid and high-contrast fully touchscreen
- Simple pages, clear display, large keys
- Intuitive user-friendly interface
- Complete programming for efficient mass-production with multiple bends
- Easy single bends with EasyBend page
- On-line help and interactive warning pop-ups
- Comfortable wireless data backup and software updating using PC or Notebook
- Large variety of languages available

STRONG

- Controls 4 axes.
- Automatic bend sequencing (option)
- Bend allowance calculation
- Pressure – crowning calculation
- Modular tools for each part or bend
- Angle and back gauge correction
- Telemaintenance via wireless connection with PC or notebook
- USB port for memory stick for data transfer/backup

ER99

STEP AUTOMATION

Speed-Bend Pro (Standard)
Power-Bend Pro (Optional)

Power-Bend Falcon (Optional)
Eco-Bend Expert (Optional)



GENERAL SPECIFICATIONS

- Windows style operating system
- Automatic bending order search and collision control
- Alphanumeric multifunction keyboard
- Ability to select appropriate auto-defined tools for bending
- Configurable up to 16 axes
- CAD/CAM sheet metal bending simulation for ERMAKSAN press brakes
- Capability to add external keyboard and mouse
- Remote support via TeamViewer
- Image uploading from mobile devices
- Compliant with Industry 4.0
- Tool and part import as CAD file
- Export of planary lines calculated as a DXF file
- Sensor interface and imaging
- Calender based maintenance management for machine's continuous productivity
- Material sampling for precise production

ER77

STEP AUTOMATION

Power-Bend Falcon (Standard)
Power-Bend Pro (Optional)

Eco-Bend Expert (Optional)



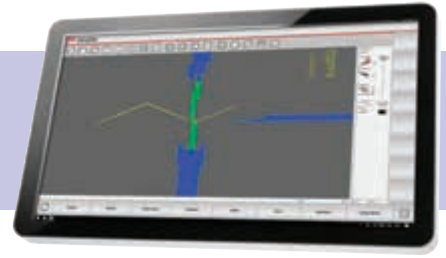
GENERAL SPECIFICATIONS

- 11" capacitive colour touch screen
- Linux operating system
- 2D part programming (touch)
- 3D bending simulation (for programs prepared by IDEA PC)
- Specifying automatic bending sequence
- Collision prevention
- 7 axis support
- Compatible with Windows operating system
- Offline software
- Remote technical support with Team Wiewer
- Monitoring the back stops online via the movable control unit
- Capability to import tools from a DXF file
- Capability to increase the number of additional axes used
- Multiple machine identification and manufacturing management

S675

ESA

Speed-Bend Pro (Optional)



- 21,5" multiple touch screen
- Make the best of any 3D cad cam you would like to install in the CNC.
- Finger-tip work piece design. Direct import of tools shapes (.dxf files) and management of tool library.
- Tool and die holders management.
- Angle measurement and correction with all existing devices is available.

S660

ESA

Speed-Bend Pro (Standard)



- 19" multiple touch screen
- Genuine 3D CAD/CAM image on the machine with integral powerful PC and work piece design with Fingertip
- Direct download of files with *.dxf extension and team library management. Top and bottom die holder options
- Up to 12 axes control in any combination

S640

ESA

Power-Bend Falcon (Standard)

Power-Bend Pro (Optional)

Eco-Bend Expert (Optional)



- High performance compact solution with 15" touch screen
- Up to 6 axes control in any combination
- Provides an excellent comfort to the operator with its wide screen by benefiting from the full graphical interface
- Automatic bending sequence calculation and material database registration for preventive compensation to reduce the wastage rate
- Crowning correction with angles
- Up to 6 axes control in any combination

S630

ESA

Power-Bend Pro (Standard)

Eco-Bend Expert (Standard)



- 10" touch screen with 2D graph
- High-level graphics programming for ease of use
- Up to 4 axes control in any combination



Organize San. Bölgesi Lacivert Cad. No:6 Nilüfer / Bursa / Turkey

T: +90 224 294 75 00 (pbx) F: +90 224 294 75 44 ermaksan.com.tr | sales@ermaksan.com.tr

[ermaksanmakine](#) [ErmaksanTR](#) [ermaksanmachine](#) [ErmaksanTV](#)



2860 River Road, Suite:145, 60018 Des Plaines, Illinois
C: +1 630-512-7604 | ermakusa.com | info@ermakusa.com



Ridderstrasse 52 48683 Ahaus
T: +49 2561 - 86 00 400
ermakdeutschland.de | info@ermakdeutschland.de